

由于市场及产品改进的需要，本手册所列产品的照片、技术参数、说明有可能改变，恕不另行通知，最终解释权归东莞市恒钜机械设备有限公司所有！
As the needs of market and product improvement, this handbook listed product photographs, technical parameters and Spec, it is possible to change without.
The final interpretation belongs to Dongguan HENGJU Machinery Equipment Co.,Ltd.

HENGJU MACHINERY 恒钜机械



Solution For Plastic Processing Factory Automation

塑料成型周边设备自动化系统集成商

www.gdhengju.com

HENGJU MACHINERY

恒钜机械

SOLUTION FOR PLASTIC PROCESSING FACTORY AUTOMATION 塑料成型周边设备自动化系统集成商



东莞市恒钜机械设备有限公司

香港九龙旺角33号凯途发展大厦7楼04室

地址：东莞市东城区光明新街路168号

手机：15817747776

电话：0769-82937256

传真：0769-82937286

邮箱：HJ@gdhengju.com

网址：www.gdhengju.com

DONGGUAN HENGJU MACHINERY EQUIPMENT CO.,LTD.

Unit 04, 7/F, Bright Way Tower, No.33 Mongkok Road, Kowloon, Hongkong

Add: No.168#, Xinjie Road, Dongcheng District, Dongguan, Guangdong, China

Phone: +86 15817747776

Tel: +86-769-82937256

Fax: +86-769-82937286

E-mail: HJ@gdhengju.com

Website: www.gdhengju.com



www.gdhengju.com

东莞工厂地址：13925705624

Company profile

企業概況

恒鉅，是一家專注於研發生產塑料成型輔助設備與塑膠生產車間整廠自動化系統規劃設計一體化集成商。多年的塑機輔機行業經驗讓恒鉅一直領先於國內同行業，並且擁有着廣闊的國內外市場。隨着海外市場的不斷開拓與壯大，恒鉅的產品銷售網絡已經分布到歐美、中東、亞太等幾十個國家，恒鉅這個品牌正在被越來越多的國家接受和認可。

在企業文化方面，公司堅持以人為本的原則，為恒鉅人提供寬鬆的工作環境以及舒適的住宿環境；每年進行大量的培訓，以提高恒鉅人的整體素質，形成強大的凝聚力，讓每一個恒鉅人都有一種歸屬感。

經過多年的發展，恒鉅人一直秉着“憑質量生存，靠信譽發展”這一宗旨，無論在哪裏，祇要有對恒鉅產品的需求，恒鉅的服務就會到哪裏！讓恒鉅在激烈的市場競爭中立于不敗之地！

我們誠望能與各行業攜手共進，共謀發展。

HENGJU is a professional manufacturer which dedicated to Research and Development and Producing the PLASTIC moulding ancillary machines, and meanwhile it is a intelligent solution supplier for automation plastic production workshop to planning and designing and integrating the whole system. Years of experience in the industry presses auxiliary let HengJu been leading in the domestic industry, and has a broad domestic and international markets. With the overseas market continues to develop and grow, HengJu product sales network has been distributed to Europe, the Middle East, Asia and many other countries, HengJu this brand is being more and more countries recognized and accepted.

In the corporate culture, the company adhere to the people-oriented principle, to provide a relaxed working environment and comfortable accommodation to HengJu people; a lot of training each year, in order to improve the overall quality HengJu people and create a strong cohesion, so that every HengJu people there is a sense of belonging.

After years of development, HengJu people have been holding "With the quality of survival, relying on the credibility of development" purposes, no matter where, as long as there is HengJu demand for constant product, HengJu service will be to go! Let HengJu in the fierce competition in the market!

We sincerely hope to work with all sectors work together to seek common development.





Company Culture 企業文化

對於恒鉅，研發技術辦公室是一個具有策略意義的部門，它擁有先進的技術和優秀的技術人員，一切以客戶的需求為中心是該部門創新的特徵和使命，採用最先進的精確計算和造型工具實現非常人性化的自動化設計。至今已拿下100多項專利技術。

恒鉅堅持以人品優先、價值共連、不拘一格、人盡其才的培養理念。對於恒鉅人，通過自身的努力和學習到的技能後成為公司的砥柱，員工能夠為在恒鉅工作而感到自豪。對於恒鉅，高素質人才是公司企業最重要的資源，團隊整體成長是恒鉅的核心，也是一切以客戶為中心理念的驅動者。

恒鉅公司願景：
成為全球領先的塑料自動化設備品牌

恒鉅公司使命：
聚焦客戶關注點，並為客戶提供有競爭力的自動化解決方案，與客戶建立長期穩定的夥伴關係

恒鉅公司價值觀：
 客戶第一 團隊合作
 尊重個性 忠誠守信
 集體奮鬥 開拓進取

企業哲學：
你就是公司

It is a strategic department as HENGJU's Research and Development office, it has advantage and leading world technology and excellent technical engineer with rich experience in this industry. Which focus on the customer's demand that adopts the most advanced refined calculation and molder's tool to achieve the automation design in humanization, until now already have got over 100 patented technology.

HENGJU always insist on "PEOPLE FIRST, VALUE COOPERATION, DIVERSIFICATION, MAKE THE BEST" as company's philosophy. HENGJU's staffs can be achieve self-worth through working and studying hard and to be the mainstay for HENGJU. It is a very important resource for HENGJU of high-quality talents people, overall growing up as a team is the core for HENGJU, and also a driver for Customer-service philosophy.

Company Vision:
Global leading brand of plastic automation equipment

Company Mission:
Focus on customer concerns, and provide competitive automation solutions to establish long-term and stable partnership!

Company Values:
 Customer first Teamwork
 Respect for individuality Loyal and trustworthy
 Team struggle Forge ahead

Company Philosophy:
We are the family





Fabricating machinery and work site

加工設備 生產現場

恒鉅擁有豐富的研發製造經驗，精益求精的工作態度，實行全面ISO9001-2000管理體系系統認證，國家高新技術企業認證。

HENGJU has rich experience in R&D and manufacturing, which implement the international ISO9001-2000 management system for the factory with National High-Tech Enterprise Certification, the advanced processing



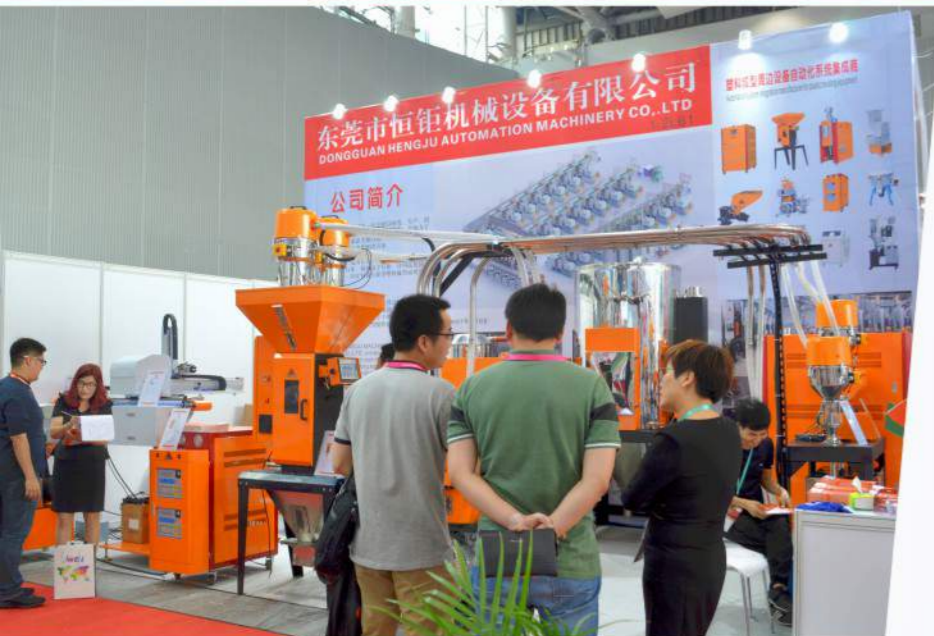
先進加工設備：
光纖激光切割設備
數控拆彎設備
綫割加工設備
CNC數控
自動焊接加工設備
銑床

Equipment included:
Optical fiber laser cutting machine,
Digital control bending machine,
Line cutting processing machine,
CNC digital controller,
Automatic welding processing machine
Milling machine.



Honors

榮譽證書



實力見證榮耀，品質鑄就輝煌。汗水與智慧見證了昨日拼搏的足跡，激情與夢想成就今天勝利的恒鉅。恒鉅人在市場經濟舞臺上銳意進取，開拓創新，在務實求精中踐行客戶第一、開拓進取的價值理念，收穫不絕于耳的贊揚聲，斬獲一項項令人矚目的榮耀。

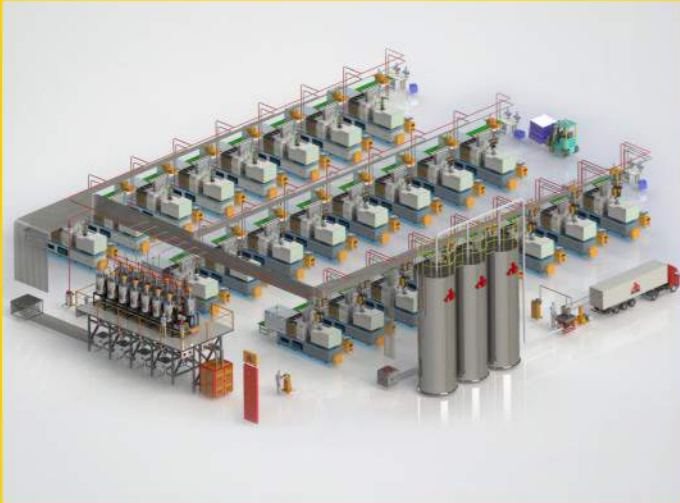
Strength witnesses glory, quality casts brilliance. Sweat and wisdom have seen the track of yesterday's struggle, passion and dreams, HENGJU victory today. HENGJU people in the market economy stage, forge ahead, pioneering and innovative, pragmatic refinement in practice the customer first, pioneering and enterprising values, harvest praise gains can be heard without end, a great glory.



Contents

11-15

中央供料系統
Central feeding system



16-25

除濕乾燥系統
Dehumidification drying system



26-29

吸料機系列
Suction machine series



30-39

模溫冷水機系列
Mold temperature chiller series



41-49

混料計量系列
Mixing measurement series



50-52

破碎機系列
Crusher series



53-59

機械手系列
Manipulator series



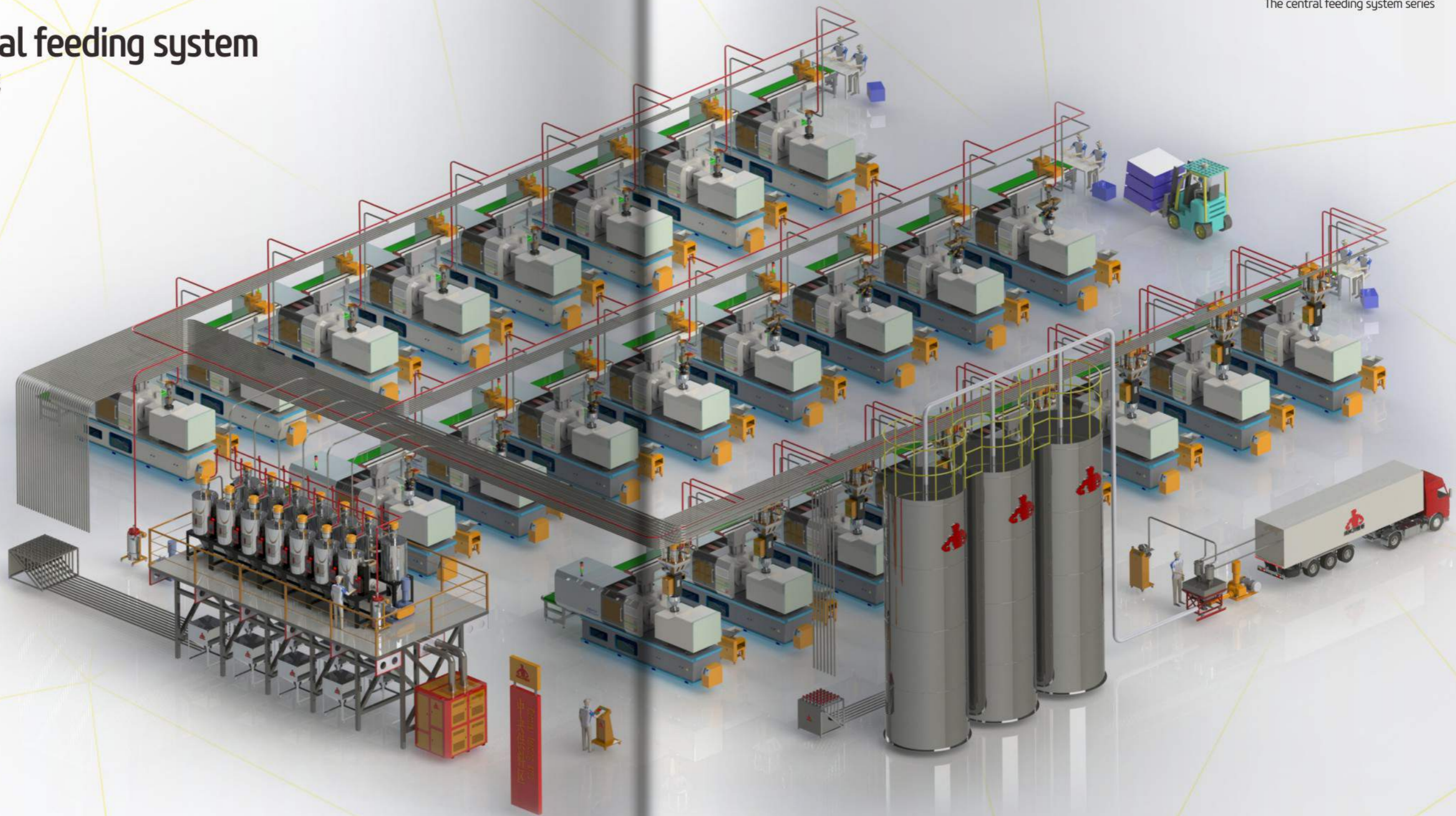
60-70

客戶現場應用案例
Customers application cases



The central feeding system

中央供料系統



中央控制臺
Central control unit



脉動高能效過濾器
Pulsating high efficiency filter



壹用一備
Single purpose standby



分歧站
MS Material Distribution Station MS



吸料門
Photoelectric Suction hopper



單管抽空吸料盒
Single tubes suction box



吸料盒
Suction box



截風閥
Air cut-off valve



截料閥
Material Cut-off valve



管道連接器
Pipeline connector

Controller

控制器



中央控制臺
Central control unit

特點 Features

- 操作界面與運轉狀態顯示面板數字化、智能化的PLC+觸控屏。簡易的人機對話，是操作更方便；
 - 由專人監控，亦可與PC聯機；
 - 顯示熒屏可清楚顯示出機臺、乾燥筒、料桶之動轉狀態，如開機、滿料、缺料及原料等；
 - 外形美觀耐用，體積小，不占空間；
 - 有滿料和缺料顯示和報警；
 - 各種供料參數可設定；
 - 觸摸屏彩色界面版；
 - 有記憶功能；
 - 故障顯示功能。
- Operation interface and operation state display panel digital, intelligent PLC plus touch screen. Simple man-machine dialogue, to make the operation more convenient;
 - Monitoring by hand, and also can be connected with PC;
 - Display screen can be shown clearly, drying machine barrel, barrel of running state, such as a boot, filled with materials, shortage of raw materials and kinds of raw materials;
 - Figure is beautiful and durable, small size, less occupied space;
 - There are full of material and shortage material alarm and display;
 - Various feeding parameters can be set;
 - Touch screen interface color edition;
 - Have memory function;
 - Fault display function.



一體式中央控制臺
Integrated central console



電控箱
Electronic control cabinet

High pressure positive blower HB

高壓風機HB



兩用一備
Dual purpose standby



壹用一備
Single purpose standby

特點 Features

- 採用雙段式高壓風機或羅茨風機作風源，負壓壓力大，噪音低；
 - 外側散熱軸承，散熱效果佳，運轉壽命長；
 - 採用滿料時馬達不停止設計，避免啟動頻繁造成損耗；
 - 採用高效率鋁合金風葉吸震式固定底座和內藏式消音管；
 - 工業用50-60HZ鼠籠式馬達，且有馬達軸封保護裝置。
- Using double stage high pressure blower or Roots blower as source, negative pressure is strong, low noise;
 - The lateral heat dissipation bearing, cooling beautiful, running long life;
 - When using full feed motors do not stop design, avoid frequent start caused loss;
 - Efficient use of aluminium alloy fan shock absorption type fixing base and a built-in silencer tube;
 - Industrial 50-60HZ mussaurus type motor, and the motor shaft seal protection device.

羅茨鼓風機參數 Roots Blower Parameters

型號 Model	HFV-10	HFV-15	HFV-20	HFV-30	HFV-40	HFV-50	HFV-75
口徑 Caliber	3"	4"	5"	5"	6"	8"	10"
電力馬達HP Electric motor	10HP	15HP	20HP	30HP	40HP	50HP	75HP
風壓 Pressure	-4000	-4000	-5000	-5000	-5000	-5000	-5000
風量 Wind	6	8	13	17	22	30	50

高壓風機產品參數 High pressure fan Specifications

HB 型號 Model	單位 UNIT	720H16	720H26	720H37	720H47	720H57	720H67	720H77
額定功率 Rated power	KW	2.2 單段	3.0 單段	4.3 雙段	5.5 單段	7.5 單段	5.5 雙段	7.5 雙段
最大風壓 The Maximum wind Pressure	Mbar	290	300	380	420	450	420	450
真空度 Vacuum pump	Mbar	-260	-270	-360	-370	-380	-400	-460
最大風量 Maximum air flow	m ³ /h	270	318	320	530	530	320	320
正常使用壓力 Normal Operating Pressure	Mbar	-240	-250	-340	-350	-360	-420	-460
電壓 Voltage					3 c 220V	3 c 380V		



Combined Pulsating Cyclone And Dust Collection

脉動旋風集塵組合



特點 Features

- 採用每單次吸料後進行空氣濾逆向清洗, 避免濾清器阻塞造成困擾, 配備儲壓罐, 安裝超壓保護, 收集細微粉塵, 保護高壓風機;
- 採用臺灣電磁閥;
- 過濾器桶身採用不銹鋼制作, 過濾器內部安裝紙質過濾器, 底部安裝活動腳輪;
- 加裝閥門設計, 可不停機清理濾清器。
- Using per single suction air after the filtering reverse cleaning, avoid filter obstruction causing distress, equipped with the pressure storage tank, installation of overpressure protection, collection of fine dust, protect the high pressure fan; Using Taiwan electromagnetic valve;
- The filter barrel body adopts a stainless steel production, paper filter is installed inside of the filter, bottom mounted movable castors;
- Install valve design, can clean filter when operating.

Material storage tank

儲料桶



規格參數表 Specifications Parameters of All Models

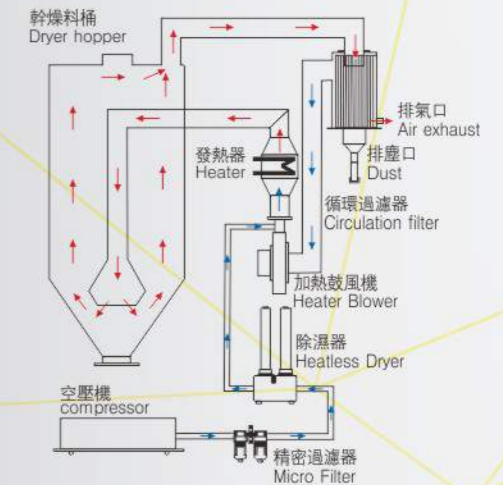
型號 Model	容量 Capacity (kg)	□ □ □ □ Size WxDxH
TANK-25	25	410x410x790
TANK-50	50	510x510x850
TANK-100	100	560x560x1050
TANK-200	200	730x730x1250
TANK-300	300	860x860x1350
TANK-400	400	1030x1030x1380
TANK-500	500	1190x1190x1350
TANK-600	600	1190x1190x1470
TANK-800	800	φ 1100xH2325
TANK-1000	1000	φ 1250xH2350
TANK-1200	1200	φ 1250xH2605
TANK-1500	1500	φ 1400xH2720
TANK-2000	2000	φ 1500xH2720
TANK-3000	3000	φ 1600xH3350
TANK-5000	5000	φ 1800xH4450

特點 Features

- 本儲料桶適用於少量多樣化的生產結構, 儲料桶外加防塵上蓋;
- 減少污染, 排列整齊, 省空間, 利于管理識別。
- The storage tank is suitable for small quantities variety of production structures, with dust-proof cover;
- Reduce pollution, arrange in order, save space, and convenient for managing identification

3 in 1 dehumidifying dryer (energy saving)

節能式三機一體除濕乾燥機



特點 Features

- 一體式設計保證了物料在完全封閉的系統中進行乾燥, 避免乾燥後的原料因接觸外加工空氣而再回潮, 達到良好的乾燥效果。
- 微電腦PID控制系統, 具有超溫保護、馬達過載、電機逆向保護、停機延時冷卻等保護功能。
- 可選配觸摸式液晶顯示控制屏, 具有顯示工作狀態、故障原因及排除方法、機器保養燈說明。
- 低露點, -40℃以下露點的乾燥空氣保證物料充分乾燥。
- 下吹式乾燥料門, 防止熱能散失, 提高乾燥效率。
- 全保溫式乾燥料門, 防止熱能散失, 確保穩定均勻。
- 技術先進, 安全可靠, 性能優越, 節省空間。
- The 3 in 1 compact designed for dehumidifying dryer assures that the drying process is operating in the entire sealed system, avoiding to humidify again the raw materials contacts to the air after being dried, achieving as good drying results.
- Microcomputer PID control system, with protective functions of over-heat protection, motor overloaded, motor reverse protection, delayed cooling downtime.
- Alternative for touch-screen liquid crystal display, are available to display operational conditions, trouble shooting and maintenance instructions.
- Low dew point reach -40℃ to ensure materials drying completely by dried air.
- Downwards blowing design to prevent heat loss and increase drying efficiency.
- Double insulating hopper prevents heat loss and maintains regular temperature
- With advanced technology, provides safely, reliable, space-saving and high performance.

規格參數表 Specifications Parameters of All Models

型號 Model		HCK-15	HCK-25	HCK-50	HCK-75	HCK-100	HCK-150	HCK-200	HCK-300	HCK-400
乾燥料門 Dryer Hopper	容量 Capacity(L)	15	25	50	75	100	150	200	300	400
	保溫材料 Heat Protection Material	玻璃纖維保溫材料+外裝板Fiberglass+Stainless Steel								
乾燥空氣平均露點 Dry-Air Dew point		-40℃								
乾燥溫度 Temperature(℃)		80-160								
乾燥風機 Blower Power(KW)		0.75	0.75	1.1	1.5	2.2	3	5.5	7.5	7.5
再生風機 Regeneration Blower(KW)		0.25	0.25	0.25	0.55	0.55	0.75	0.75	2.2	2.2
乾燥電熱 Drying Heater(KW)		3.9	5.4	5.4	7.2	12	151	8	21	21
再生電熱 Regeneration Heater(KW)		3.9	3.9	3.9	5.4	5.4	7.2	7.2	10	10
管徑 Pipe Sizes	乾燥 Drying(mn)	51	51	51	63	63	76	76	100	100
	冷卻 Cooling(Inch)	3/4"								
	再生 Regeneration(mn)	38	38	38	51	51	51	51	63	63
送料風機 Conveying Blower(KW)		1.1	1.1	1.1	1.5	1.5	1.5	2.2	3.7	3.7
輸送距離 Conveying Distance(m)	一次送料 Stage 1	10								
	二次送料 Stage 2	10								
送料配管 Hose Size(Inch)		1.5							2	2
電眼料門 Sensor Hopper Capacity(L)		6	6	6	6	6	6	6	10	10
真空料門 Vacuum Hopper Capacity(L)		6	6	6	6	6	6	6	10	10
外形尺寸 Dimension LxWxH(cm)		100×87×180	100×87×180	100×87×180	123×95×239	165×130×225	150×130×280	178×130×280	214×138×316	225×138×349
淨重約/Approx. Net Weight(KG)		310	340	360	420	550	600	750	830	900

乾燥風的露點溫度s-20℃, 都能完全充分乾燥塑膠原料。 注: 壓縮空氣壓力要求大于0.4MPa, 流量大于15L/H; 產品規格若有增加變更, 恕不另行通知。
Remark: Compressed air Pressure must more than 0.4MPa, air flow more than 15L/H; We reserve the right to change specifications without prior notice.

3 in 1 dehumidifying dryer

三機一體除濕乾燥機



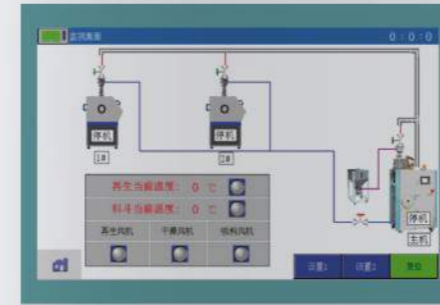
HCF系列由除濕、乾燥兩種功能為一體，廣泛適用於各種塑膠原料，尤其是吸濕性較強的工程塑料，如：PA、PC、PBT、PET等，蜂巢轉輪在理想狀態下最低可達-40℃以下的露點。該系列產品採用瑞典進口系列蜂巢轉輪除濕機搭配下吹式全不銹鋼歐化保溫乾燥料桶組合而成。

特點 Features

- HCF系列歐化除濕乾燥組合一律配備蜂巢轉輪除濕機，造型為半開放式，整體造型美觀新穎；集除濕、乾燥二種功能於一體，并可選擇一對多的系統；
- 保溫式乾燥料桶採用特有下吹風管設計搭配旋風排氣裝置能提高乾燥效率，並能防止熱能散失，確保濕度；
- 該系列除濕系統採用雙冷卻器結構，確保更低回風溫度及露點；
- 機器占地小，移動方便，可任意更換機臺使用；
- 該機配備微電腦控制為標準裝備，可選配PLC控制搭配LCD觸控式人機界面，操作集中方便，可控制整機自動運行；
- 可選配露點計，方便隨時監控露點；
- 可選配吸料盒與自動填料機，方便原料輸送；
- 改符合歐規安全回路型時，機型後加注"CE"。

The HCF series dehumidifying dryer combine a dehumidifying and drying system in a single unit. They have many applications in processing plastic materials such as PA, PC, PBT, PET, etc. can supply dehumidified dry air with a dew-point down to -40 and -50 respectively. All models feature TD-H honeycomb dehumidifiers with built-in process heater, and insulated drying hopper. The HCF series offers accurate PID temperature control as standard, with LCD touch screen, dew-point monitor, and hopper loaders as optional feature.

- The HCF dehumidifying dryer use honeycomb dehumidifiers with an eye-catching semi-integral appearance.
- Each model combines dehumidifying and drying functions into a single unit.
- Material processing is controlled via microprocessor as standard, with touch screen PLC control as an option for more convenient control.
- Insulated drying hopper features dry air downblowing and cyclone exhaust design. This improves drying efficiency and reduces energy consumption whilst maintaining a steady drying effect.
- Compact in size for ease of movement and space saving.
- The dehumidifying section of the HCF series features two condensers to ensure a low return air temperature and low dew-point.
- Dew-point monitor can be fitted to check dry air dew-point.
- Optional suction box and hopper loader for added convenience when conveying material.



監視畫面
Monitor screen

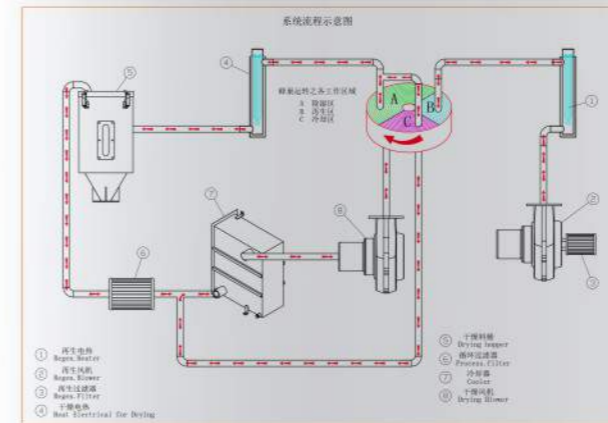


瑞典PROFLUTE蜂巢轉輪
SWEDEN PROFLUTE brand
Honeycomb wheel



電控箱
Electronic control box

系統流程示意圖 Schematic diagram of system flow



規格參數表 Specifications Parameters of All Models

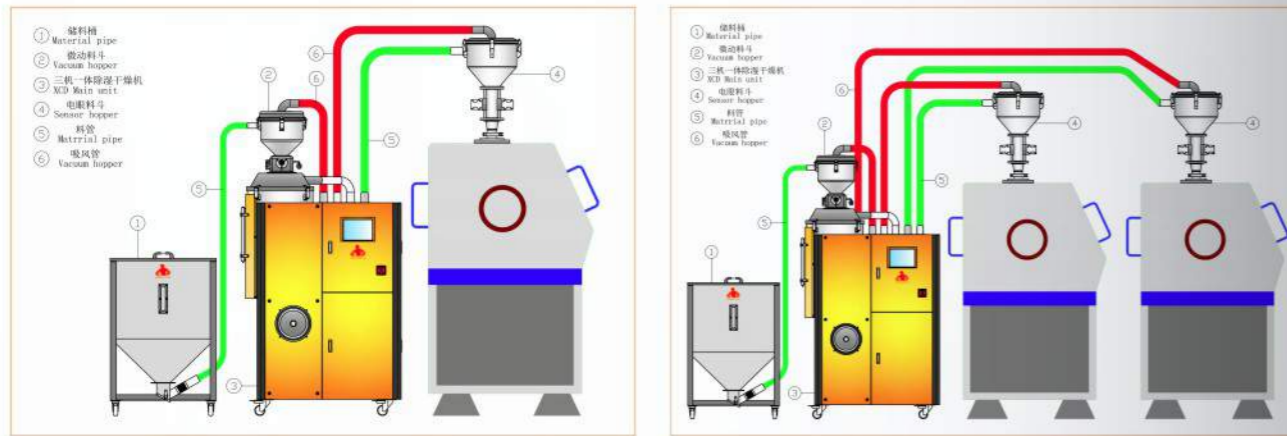
露點 Dew point ℃	相對濕度 Relative humidity %	含水率 Moisture content	
		PPM	%
-50	0.169	38.96	0.0038
-40	0.533	127.5	0.0127
-30	1.64	377.76	0.0377
-20	4.44	1025	0.1025
-10	11.15	2573.68	0.2573
0	26.12	6027.63	0.6027
10	52.52	12117.1	1.2117
20	100	23072.37	2.3072

規格參數表 Specifications Parameters of All Models

型號 Model		HCF-8015/ 25/50/75	HCF-12075/ 100/150	HCF-150100/ 120/150/200	HCF-200200/300	HCF-300300/400	HCF-400400
乾燥料門 Dryer Hopper	容量 Capacity(L)	15/25/50/75	75/100/150	100/120/150/200	200/300	300/400	400
	保溫材料 Heat Protection Material	玻璃纖維保溫材料+外裝板 Fiberglass+Stainless Steel					
乾燥空氣平均露點 Dry-Air Dew point		-40℃					
乾燥溫度 Temperature(℃)		80-180					
乾燥風量 Air Flow(m ³ /h)		80	120	150	200	300	400
乾燥風機 Blower Power(KW)		0.75	1.1	1.5	2.2	3.8	5.5
再生風機 Regeneration Blower(KW)		0.25	0.375	0.375	0.375	0.75	0.75
乾燥電熱 Drying Heater(KW)		3/3/3.9/4.2	4.2/6.2/7	6.2/7/7/11	11/18	18/20	20
再生電熱 Regeneration Heater(KW)		2.7/3.8/3.8/3.8	3.8	5.4	7.2	7.2	7.2
管徑 Pipe Sizes	乾燥 Drying(mn)	51	51	51	63	63	76
	冷卻 Cooling(Inch)	3/4"					
	再生 Regeneration(mn)	38	38	38	51	51	51
送料風機 Conveying Blower(KW)		0.75	0.75	0.75/0.75/0.75/2	2	2	2
輸送距離 Conveying Distance(m)		一次送料 Stage 1		10			
		二次送料 Stage 2		10			
送料配管 Hose Size(Inch)		1.5					
電眼料門 Sensor Hopper Capacity(L)		7.5					
真空料門 Vacuum HOPPER Capacity(L)		7.5					
外形尺寸 Dimension LxWxH(cm)		100×87×180	100×87×180	100×87×180	123×95×239	165×130×225	150×130×280
淨重約/Approx. Net Weight(KG)		310	340	360	420	550	600

乾燥風的露點溫度s-20℃，都能完全充分乾燥塑膠原料。 注：壓縮空氣壓力要求大於0.4MPa，流量大於15L/H；產品規格若有增加或變更，恕不另行通知。
Remark: Compressed air Pressure must more than 0.4MPa, air flow more than 15L/H; We reserve the right to change specifications without prior notice.

三機一體示意圖 3 in 1 machine sketch map



原料物性表 Material property schedule

樹脂原料 Plastic material	乾燥 Dryer	堆積密度(kg/dm³) Density	乾燥時間(h) Drying time	乾燥溫度(°C) Drying temperature	標準大氣壓的流量 (m³/kg) Atmospheric flow	成型水分率(%重量比) Moulding moisture content	初始水分率(%重量比) Initial moisture content
ABS	√	0.55	2-3	85	2	<0.020	<0.2
CAB	√	0.60	2-3	70	2	<0.020	<0.6
EVA(2)	√	0.60	2-3	90-105	1.8	-	-
EVOH	√	0.60	2-3	90-105	2	-	-
IM(4)	√	0.50	3	60	2	<0.080	<0.2
LCP	√	0.80	3-4	150	2.2	<0.01	<0.05
PA11	√	0.60	3-5	70-80	2	-	0.6-1.2*
PA 6.46.6	√	0.60	4-6	70-80	2	0.15-0.02*	0.6-1.2*
PAI	√	0.85	6-8	180	2	<0.02	-
par	√	0.70	5-6	120	2	<0.02	-
PBT	√	0.80	3-4	130-140	2.2	<0.02	<0.15
PC	√	0.65	2-3	120	2	<0.02	<0.3
PC/ABS	√	0.65	42798	100	2	<0.020	<0.1
PC/PBT	√	0.75	3-4	110	2.2	-	-
PE.HDPE.LDPE black3%	×	0.50	1	85	1.6	<0.01	<0.02
PE.HDPE.LDPE black 40%	√	0.70	2-3	80-90	2	<0.02	<0.2
PEEK	√	0.80	3-4	150-160	2.2	<0.05	<0.1
PEI(1)(3)	√	0.75	4-5	140-160	2.5	<0.01	<0.2
PEN(1)(3)	√	0.85	5-6	150-170	3	<0.005	-
PES	√	0.80	3-4	150-180	2	<0.05	0.35
PET	√	0.84	5-6	160-180	3	<0.003	<0.2
PETG	√	0.74	4-5	65	3.5	<0.01	<0.1
PI	√	0.70	2-3	120	2.2	<0.02	-
PMMA-	√	0.65	3-4	80	3	<0.02	<0.3
POM	√	0.85	2-3	90-100	2	-	<0.15
PP	×	0.50	1	80-90	2	-	-
PPO	√	0.55	2	100-110	2	<0.01	-
PPS	√	0.80	2-3	130-140	2	<0.01	<0.03
PS[GPPS.EPS.HIPS]	×	0.55	1	80	1.7	<0.02	<0.05
PSU	√	0.80	3-4	120-130	2	<0.05	<0.1
PIT	√	0.80	5-6	130-150	3	<0.005	<0.2
PUR	√	0.75	2-3	70-90	2	<0.02	-
PVC	×	0.85	1	70-80	1.4	<0.02	-
SAN	√	0.55	2-3	80	2	<0.02	<0.1
SB	√	0.60	1-2	80	2	<0.02	-
TPE	√	0.65	2-3	110	2.2	<0.05	<0.3
TPE	√	0.65	2-3	80	2.2	<0.1	-
TPO	√	0.55	3	70-90	2	-	-
TPU	√	0.75	2-3	70-100	2	<0.02	-

Honeycomb dehumidifier

除濕機



轉輪式蜂巢除濕機主要部件均採用進口元器件，精心選材，良工裝配。機臺的主要用途是與熱風式料門乾燥機搭配，對吸濕性較強的工程塑料（如：PA, PC, PBT, PET等）進行高效率的除濕乾燥作業。

working with hopper dryer, the denumidifier is used to dehumidify engineering plastics which contain moisture, such as PA,PC,PET, etc.

特點 Features

- 採用P.I.D溫度控制系統，該系統具有再生溫度設定與實際溫度顯示屏幕。
- 可調蜂巢轉輪之旋轉速度。
- 採用雙冷凝器結構，確保更低的回風溫度及露點。
- 蜂巢可達到-40°C以下露點，在配置增強狀態下更可達到-50°C甚至更低的露點。
- 可選配PLC控制搭配LCD觸控式人機界面。
- 可隨時監控機器除濕效果的露點計供選配。
- 機器占地小，移動方便，可任意更換機臺使用。
- 此系列產品通過歐洲CE標準認證。
- P.I.D.temperature controlling system adopted.with displays of regeneration temperature and real temperature.
- Adjustable rotation speed for honeycomb-like rotating wheel.
- Honeycomb-like rotating wheel can reach to dew point under -40°C in general, after enhance the configuration, dew point can being reach to under -50°C.
- Double-condenser structure to ensure lower dew point and return air temperature.
- Optional for PLC control with LCD touch screen human-computer interface.
- Monitoring the dehumidifying effect of dew point alternative anytime.
- Small space occupation, convenience movement, randomly to changing machines usage.
- CE certification

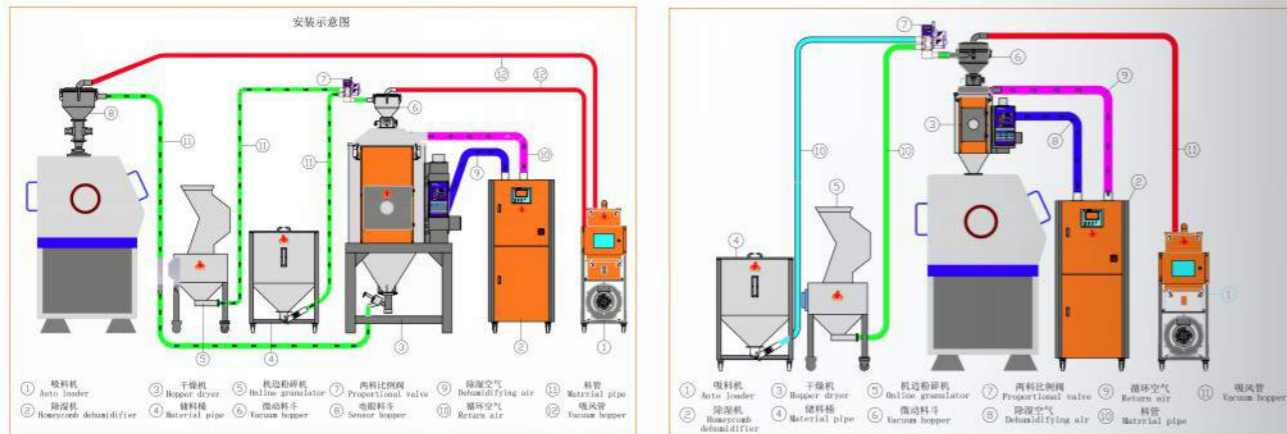


露點儀
Dew-point instrument

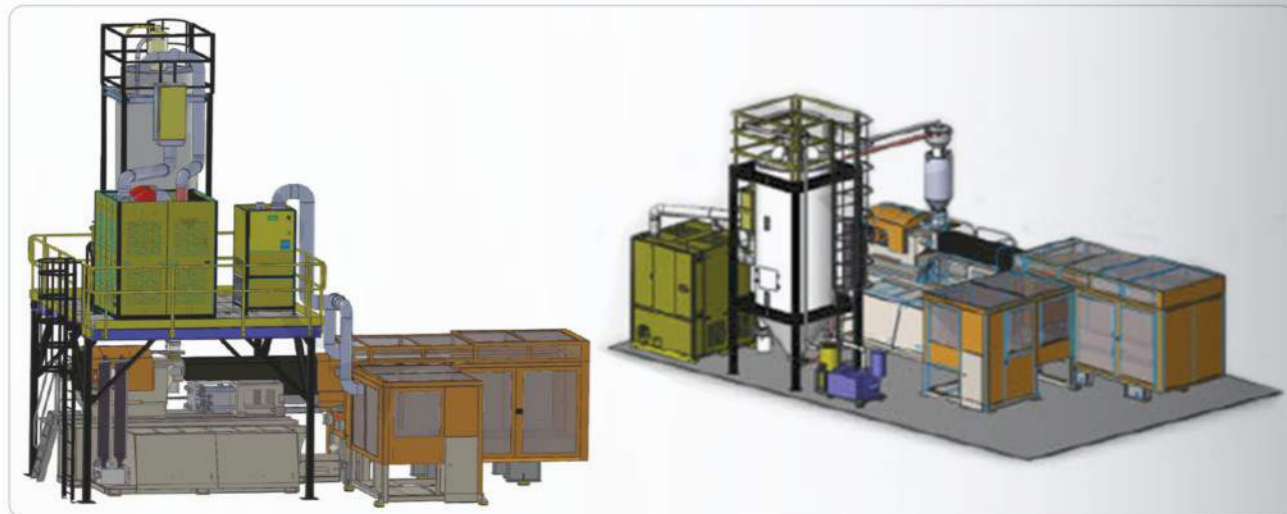
瑞典PROFLUTE蜂巢轉輪
SWEDEN PROFLUTE brand
Honeycomb wheel

水分測試儀
Moisture tester

安裝示意圖 installation diagram



PET注胚系統 PET Injection Moulding System



規格參數表 Specifications Parameters of All Models

型號 Model	乾燥風量(m³/hr) Drying Air Volume	乾燥風機功率(KW) Drying Blower Power	再生風機(KW) Regeneration Fan	再生電熱(KW) Renewable electric	冷却水口 (inch) Cooling nozzle	出入口風口口徑 (inch) out/in wind dia.	外形尺寸(cm) LxWxH Dimensions	淨重約(KG) Approx.Net Weight
HF-80	80	0.75	0.2	3.8	3/4"	2	82×55×128	145
HF-120	120	1.1	0.375	3.8	3/4"	2	82×55×128	170
HF-150	150	1.5	0.375	5.4	3/4"	2	82×55×128	170
HF-200	200	2.2	0.375	5.4	3/4"	2.5	105×66×153	265
HF-300	300	3.8	0.75	7.2	3/4"	3	126×70×170	285
HF-400	400	5.5	0.75	7.2	3/4"	3	126×70×170	330
HF-500	500	7.5	1.5	10	3/4"	4	130×90×180	350
HF-700	700	2.2	2.2	12	3/4"	4	130×90×180	480
HF-1000	1000	3.7	2.2	12	3/4"	5	168×125×190	700
HF-1200	1200	3.7	2.2	12	3/4"	6	168×125×190	860
HF-1500	1500	5.5	2.2	15	3/4"	6	168×125×190	1100
HF-2000	2000	5.5	2.2	15	11/4"	8	210×141×196	1300
HF-2000	2000	3.7x2	2.2x2	12x2	11/4"	8	210×141×196	1400
HF-3000	3000	5.5x2	2.2x2	15x2	11/4"	8	224×220×210	1600
HF-4000	4000	7.5x2	2.2x2	20x2	11/4"	12	224×220×210	2200

乾燥風的露點溫度s-20°C, 都能完全充分乾燥塑膠原料。

注: 產品規格若有增加或變更, 恕不另行通知。 Remark: We reserve the right to change specifications without prior notice.

Energy-saving euro-hopper dryer (double layer)

不銹鋼雙層節能乾燥機

特點 Features

- 不銹鋼乾燥機設有雙層保溫結構, 裝料容量50KG-8000KG供選擇。
- 雙層保溫, 保溫效果好, 外觀新穎, 節能省電。
- 特設下吹風管及環流排風功能, 保證塑料乾燥溫度均勻, 提高乾燥效率。
- 與原料接觸部分均採用不銹鋼材質制作, 保證原料精純度。
- 廣開門設計, 密封良好, 清料方便。
- 採用微電腦P.I.D控制, 溫度控制精確(選配)。
- 設有雙重過熱保護裝置, 可減少因人為或機械故障而產生的意外發生。

- European drying machines have Double thermal insulation structure, loading capacity range from 50KG to 8000KG.
- Double layer construction of heat preservation and power saving with elegant appearance.
- Have special design of downwards blowing and circulation ventilation that improving the drying efficiency, and assures that plastic drying temperature uniform.
- Contacting parts on raw materials is made of stainless steel that guarantee the purity of materials
- Open-door extensive design, easily to clean the raw materials with good sealing
- P.I.D for accurate temperature controlling(Optional)
- Double over-heat protective devices to reduce the accident happend causing by man-made or mechanical breakdown.



規格參數表 Specifications Parameters of All Models

型號 Model	裝料量 Capacity(KG)	乾燥電熱 Heating Power(KW)	風機 Blower(W)	電源 Power(V)	外形尺寸 Dimensions(HxWxD,MM)	淨重約 (kg) Approx.Net Weight
HGB-6	6	1.5	150	1φ 220V	490x490x785	25
HGB-12	12	2	160	1φ 220V	540x435x850	35
HGB-25	25	3	150	1φ 220V	605x560x1240	50
HGB-50	50	3.9	160	3φ 380V	706x594x1410	75
HGB-75	75	4.2	240	3φ 380V	751x649x1520	105
HGB-100	100	6.2	240	3φ 380V	817x581x1670	125
HGB-150	150	7	240	3φ 380V	868x710x1800	160
HGB-200	200	11	300	3φ 380V	995x830x1930	210
HGB-300	300	18	320	3φ 380V	1160x975x2280	330
HGB-400	400	20	360	3φ 380V	1220x990x2330	365
HGB-500	500	22	750	3φ 380V	1150x1045x2430	385
HGB-600	600	24	750	3φ 380V	1210x1070x2540	400
HGB-800	800	30	1500	3φ 380V	1390x1120x2730	600
HGB-1000	1000	36	1500	3φ 380V	1525x1425x3670	650
HGB-1200	1200	36	1500	3φ 380V	1600x1510x3722	835
HGB-1500	1500	40	2200	3φ 380V	1730x1680x3880	900
HGB-1800	1800	45	2200	3φ 380V	1835x1680x4060	1005
HGB-2000	2000	45	2200	3φ 380V	1870x1710x4415	1130
HGB-3000	3000	50	3700	3φ 380V	2080x1920x4520	1650
HGB-3500	3500	50	3700	3φ 380V	2141x1976x4863	2120
HGB-4000	4000	60	3700	3φ 380V	2192x2040x4936	2870
HGB-5000	5000	60	5500	3φ 380V	2355x2160x5120	3510

*以上裝料量是以堆積密度約0.65kg/L, 直徑為3-5mm塑膠原料顆粒為標準HGB最高乾燥溫度為180°C

注:

1) 機器重量不包含腳架。

2) 產品規格若有變更, 恕不另行通知。

Notice:

1) Machine weight doesn't include supporting frame.

2) We reserve the right to change specifications without prior notice.

Standard hopper dryer

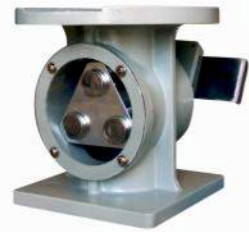
標準型乾燥機

特點 Features

- 原料接觸面為全不銹鋼材料制作。
 - 精密鑄鋁質外殼，表面光滑，保溫性能好。
 - 靜音風機，機座均設有視料窗，可直接觀察內部原料情況。
 - 電熱筒彎形設計，避免因原料粉屑堆積筒底而引起燃燒。
 - 採用數顯溫控器，可精確控制溫度。
 - 另50-1500KG有高溫型可供選擇：雙層料桶、不銹鋼電熱筒、散熱型電熱管、高溫風機。
 - 鑄鋁模具自主設計，筒體向後翻，適配任何機械手。
- Contacting parts on raw materials is made of stainless steel.
 - Precisely cast aluminum shell, smooth surface and good performance of maintaining temperature setting.
 - Low noise blower, machine seat installed with visual window, can observe internal raw materials directly
 - Curved electric heating tube designed, avoid burning caused by raw materials dust accumulation at the bottom of tank.
 - Precisely temperature control by adopts digital (proportional deviation) display temperature controller.
 - Installed with proportional deviation display thermostat to control temperature accurately.
 - 50-1500KG has high-temperature alternative: double-layer materials tank, stainless steel and heat release electric heating tube, high-temperature fan.
 - Available for any type of motor robot hand as casting aluminum die independent designed of barrel rolled backwards.



普通型二機一體
Ordinary type two-machines-one



磁力底座
Magnetic base



磁力架
Magnetic Separator



L型腳架
L-type tripod



過濾器
Filter

規格參數表 Specifications Parameters of All Models

型號 Model	容量 Capacity(kg)	電熱 Heating(kw)	風機 Blower(w)	電源 Power(v)	外形尺寸 Dimensions(cm)	底座尺寸 Base Size(KxKxD)(cm)	淨重約 Approx.Net Weight(kg)
HGP-12	12	1.8	50	1φ 220V	64x44x74	11x11xΦ4	22
HGP-25	25	3.5	122	1φ 220V	76x50x104	16x16xΦ6.2	34
HGP-50	50	4.5	157	1φ 220V	87x54x121	16x16xΦ7	45
HGP-75	75	6.5	227	3φ 380V	94x60x131	16x16xΦ7	56
HGP-100	100	6.5	246	3φ 380V	101x70x141	18x18xΦ8	68
HGP-150	150	9	350	3φ 380V	110x74x162	20x20xΦ8.8	78
HGP-200	200	12	350	3φ 380V	118x84x176	23x23xΦ11.5	110
HGP-300	300	15	750	3φ 380V	142x100x188	27.5x27.5xΦ12	150
HGP-400	400	15	750	3φ 380V	148x106x202	27.5x27.5xΦ12	170
HGP-600	600	20	1100	3φ 380V	158x116x240	28x28xΦ13.5	280
HGP-800	800	30	2200	3φ 380V	177x118x254	28x28xΦ13.5	380

產品規格若有改變，恕不另行通知。We reserve the right to change specifications without prior notice.

Cabinet dryer

箱式乾燥機

特點 Features

- 應用於塑膠原料之乾燥，尤其在處理少量多樣或測試用之塑料上。
 - 可免除換料、清料之困擾，節省工時。
 - 可運用於塑料成型後之回火處理，可增強韌性，消除張力，提升產品品質。
 - 亦可應用於農產品（花粉、蒜頭、茶葉）或電子、電機、電鍍、制藥、烤漆、印刷等產品之預熱或乾燥處理。
- Application for plastic raw materials drying, especially use on less quantities with many different samples or plastic samples testing
 - To save working time by avoiding materials exchanging and cleaning.
 - Application for plastic molding tempering, that increase the plastic's toughness and eliminate the tension to improve the products quality
 - Also can be used in the preheating and drying processing for agricultural products (pollen, garlic, tea), electronic, motor, electroplating, pharmaceutical, paint, printing and other products.

規格參數表 Specifications Parameters of All Models

- 強力耐溫送風系統與獨特風路結構設計，確保內部的溫度分布均勻，烘烤品質值得信賴。
- 不銹鋼盤架與高效率之循環熱風回收再利用設計，省電、耐用，可同時乾燥多種塑料，節省能源。
- With unique design of powerful air temperature and air duct system, making sure the internal temperature distribution even, baking quality is worthy of trust.
- With stainless steel shelves and circulating hot air recycling design-energy saving, durable, suitable to dry several of plastics.

規格參數表 Specifications Parameters of All Models

型號	Model	HCD-5	HCD-9	HCD-20
外部尺寸 (mm)	External Dimensions	820×680×1280	820×680×1580	820×1500×1750
內部尺寸 (mm)	Inner Dimensions	500×600×660	500×600×900	500×1150×1200
馬達 (KW)	Motor	0.375	0.375	0.75
電熱 (KW)	Power	4.5	6	12
盤架數	Tray Quantity	5	9	20
盤架尺寸 (mm)	Tray Size	585×490×50	585×490×50	585×490×50
機臺重量 (kg)	Weight	148	178	415
裝料量(kg)	Capacity	50	90	200
材質	Tray Material	SUS430#不銹鋼		
溫度範圍	Temperature Range	40℃ ~ 200℃		
溫度分布	Temperature Distribution	± 5%		
選擇配備	Optional	PID 溫度控制器 Temperature controller		



Crystallization dryer

結晶乾燥機

特點 Features

- PET樹脂原料最廣泛的紡織用纖維、食品、醫藥包裝用原材、磁帶薄膜、工業用絲、耐高溫餐具等高聚合產品。其含水率比較高，在高溫擠出熔融時，會發生氣泡、龜裂、色澤發黃等不良缺陷。
- 由于需要特殊的乾燥處理和在包裝領域的高速發展，恒鉅機械為廣大PET注塑設備和產品生產廠家提供可靠的除濕乾燥技術保障。廣泛應用於PET之原料的結晶、乾燥，成套除濕乾燥結晶工藝設備。
- 恒鉅科技在PET成型系統之輔助設備領域有着業內領先的技術水平，可調節在各種應用領域的需要
- 制瓶和制坯魯熱成型薄膜和片材生產魯捆扎帶和工業用絲生產、管材生產、廢料回收生產
- PET raw materials is widely used in textile fiber, food and medicine packaging, tape film, industrial fiber and high temperature resistance tableware etc. as high polymer products, its higher moisture content, will cause bubble, cracking and yellow color defects.
- It has rapid development in packaging industry due to need the special processing for PET drying, HENGJU is to provide the reliable technology for dehumidification and drying to PET injection moulding machines factories and products manufacturers vastly.
- It can be widely used in various application fields for HENGJU's auxiliary equipments in PET injection moulding system industry as its technology achieving to advanced world level.
- Bottle and Preform making, Pipe production, Waste materials recycling production.



規格參數表 Specifications Parameters of All Models

型號 Model	容量Capacity (Kg)	電熱Electric heating(kw)	風機Fan (w)	攪拌電機Stirring motor (kw)	外形尺寸Size WxDxH(MM)
HDH-25	25	3	150	0.37	630x430x1065
HDH-50	50	3.9	160	0.75	670x510x1845
HDH-75	75	4.2	240	0.75	800x620x1870
HDH-100	100	6.2	240	0.75	800x620x2112
HDH-150	150	7	240	0.75	815x675x2284
HDH-200	200	11	300	1.5	905x710x2690
HDH-300	300	18	320	1.5	1120x950x2760
HDH-400	400	20	360	1.5	1220x1030x2860
HDH-500	500	22	750	1.5	1330x1070x3160
HDH-600	600	24	750	2.25	1250x1035x3220
HDH-800	800	30	1500	2.25	1335x1080x3850
HDH-1000	1000	36	1500	2.25	1470x1150x3785
HDH-1200	1200	36	1500	3.75	1470x1150x4185
HDH-1500	1500	40	1500	3.75	1730x1460x3850
HDH-2000	2000	45	1500	3.75	1960x1580x3910
HDH-3000	3000	50	1500	7.5	2070x1760x4910
HDH-5000	5000	60	1500	7.5	2200x2050x4980

備注:

- 以上最大處理量是以堆積密度為0.85 Kg/L，直徑為3-5mm
- PET未結晶原料顆粒為標準測試所得
- 機器電壓規格為：30, 400VAC, 50Hz
- 產品規格若有變更，恕不另行通知。

Note:

- The max.processing capacity above is based on accumulation density of 0.85kg/L, with 3-5mm diameter.
- The standard testing results getting from PET raw materials particles when not in crystallization.
- The voltage specification is: 30, 400VAC, 50Hz
- WE reserve the right to change specifications without prior notice.

Stand alone type auto loaders

獨立式吸料機



HAL-300G



HAL-300GE

特點 Features

- 體積小、重量輕，可直接放置在乾燥機或其他原料容器上，完成自動上料工作。
- 微電腦操作控制程序。
- 過載、缺料報警。
- 300G採用高速整流馬達，體積小、吸力強，適合用於新料輸送。
- 400G採用感應式高壓風機，噪音少、壽命長。
- 首創採用線控器控制，機臺下即可設定、控制，方便、快捷。
- 設有空氣過濾器（可選件）。

- With small footprint and low weight, available of being placed directly onto other machines or containers for auto loading.
- Microcomputer controlled.
- Alarm for overload and lack of material.
- 300G equipped with high-speed rectifier motor with delicate size and strong suction force—suitable for new materials.
- 400G with induction high pressure pump—with low noise and long service time.
- Cable control board design—easy to set and control with distance.
- Filter for air and dust

規格參數表 Specifications Parameters of All Models

型號 Model	HAL-300G	HAL-400G
馬達 Motor	碳刷式 Carbon Brush	感應式 Induction
規格 Specification	1.1KW/1.5HP 1Φ	0.75KW/1HP 3Φ
輸送能力 Conveying Capacity(Kg/h)	200	330
靜風壓 Static Wind Pressure(mm/h2o)	1300	1400
儲料桶容量 Reservoir Volume(L)	7.5	7.5
送料管內徑 Conveying Tube Inner Diameter(mm)	Φ 38	Φ 38
配料送管 Specification Of The Attached Hoses(mm)	Φ 38mmx3.5m 1Pcs	Φ 38mmx4m 1Pcs
外形尺寸 Dimension(cm)	34x34x59	45x37x66
淨重約 Approx.Net Weight(Kg)	12	27

參數中的輸送能力及吸料距離是以ABS原料堆積密度約0.65kg/L，直徑為3-5mm塑膠原料顆粒為測試材料以垂直高度4m，水平距離5m為測試標準所得。實際參數根據原料比重、形狀及輸送長度、高度、管路特性、參數設定等因素而改變。

The above parameters for conveying capacity and loading distance is based on ABS raw materials accumulation density approx. 0.65kg/L, with 3-5mm diameter of plastic materials particles as testing samples, with vertical high 4m and horizontal distance 5m as testing standard to get results. The exactly parameter would not be the same as per different plastic proportion, figure, conveying length and high and pipeline feature etc. 吸料機在輸送熱料時，料管需選配耐160度高溫料管。

Heat-resistant(160) pipes should be used when conveying hot material.

產品規格若有變更，恕不另行通知。We reserve the right to change specifications without prior notice.

Auto loaders 分體式吸料機



特點 Features

- 主機與料鬥分體設計，安全、簡便。
- 獨立濾清裝置，方便清除積塵。
- 不銹鋼料鬥。
- 微電腦操作控制程序。
- 過載、缺料報警。
- 700G採用高速整流馬達，體積小、吸力強，適合用于新料輸送。
- 800G, 800G2採用感應式高壓式風機，噪音少、壽命長。
- 800G, 800G2具有逆轉自動清除粉塵功能。

- Main machine separated from the hopper, easy and safe to operate.
- Independent filter for easy cleaning.
- Stainless hopper.
- Microcomputer control.
- Alarm for overload and short of material.
- 700G equipped with high-speed rectifier motor with delicate size and strong suction force—suitable for new materials.
- 800G/800G2 with induction high pressure pump—with low noise and long service time.
- 800G and 800G2 are designed with auto reverse cleaning devices.

規格參數表 Specifications Parameters of All Models

型號 Model		HAL-700G	HAL-800G	HAL-800G2
馬達 Motor	型式 Type	碳刷式 Carbon Brush	感應式 Induction	感應式 Induction
	規格 Specification	1KW/1.3HP 1Φ	1KW/1.5HP 3Φ	1.5KW/2HP 3Φ
輸送能力 Conveying Capacity(Kg/h)		310	450	500
靜風壓 Static Wind Pressure(mm/h2o)		1550	1800	2400
儲料桶容量 Reservoir Volume(L)		7.5	7.5	7.5
送料管內徑 Conveying Tube Inner Diameter(mm)		Φ38	Φ38	Φ38
配料送管 Specification Of The Attached Hoses(mm)		Φ38mmx4m 2Pcs	Φ38mmx4m 2Pcs	Φ38mmx5m 2Pcs
外形尺寸 Dimension(cm)	主機 Main Frame	37x30x56	42x38x64	50x40x72
	儲料桶 Hopper	28x34x43	45x32x45	45x32x45
淨重約 Approx.Net Weight(Kg)	主機 Main Frame	14	47	50
	儲料桶 Hopper	6	7	7

參數中的輸送能力及吸料揚程是以ABS原料堆積密度約0.65kg/L，直徑為3-5mm塑膠原料顆粒為測試材料以垂直高度4m，水平距離5m為測試標準所得。實際參數根據原料比重、形狀及輸送長度、高度、管路特性、參數設定等因素而改變。

The above parameters for conveying capacity and loading distance is based on ABS raw materials accumulation density approx. 0.65kg/L, with 3-5mm diameter of plastic materials particles as testing samples, with vertical high 4m and horizontal distance 5m as testing standard to get results. The exactly parameter would not be the same as per different plastic proportion, figure, conveying length and height and pipeline feature etc.

吸料機在輸送熱料時，料管需選配耐160度高溫料管。

Heat-resistant(160) pipes should be used when conveying hot material.

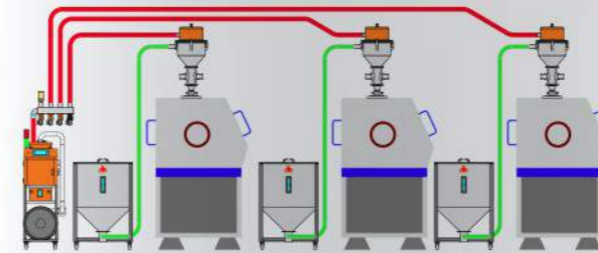
產品規格若有改變，恕不另行通知。We reserve the right to change specifications without prior notice.

High-power auto loaders 大功率吸料機

特點 Features

- 大功率吸料機是專門針對用料量大的情況所開發的款式。
- 馬達功率、送料管徑以及料鬥容量均採用加大配置，以滿足需求。
- 微電腦控制，缺料、過載報警。
- 體積小，占地少，操作靈活。
- 此系列產品通過歐洲CE標準認證。
- Full automatic programmed operation;
- Automatic alarm for overload or short of material;
- Stainless steel hopper construction;
- Main controller and hopper designed separated, to ensure safety and convenient.
- Separated filter installation, easy to remove pooling of powder;
- Automation pump reverse system.

安裝示意圖 installation diagram



規格參數表 Specifications Parameters of All Models

型號 Model		HAL-1.5HP	HAL-3HP	HAL-5HP	HAL-7.5HP	HAL-10HP
馬達 Motor		1.5/1.1	3/2.2	5/3.75	7.5/5.5	10/7.5
輸送能力 Conveying Capacity(Kg/h)		450	590	820	1000	1300
吸料揚程 Loading Distance(m)		5	5	6	6	6
靜風壓 Static Wind Pressure(mm/h2o)		2800	2800	3200	4200	4500
儲料桶容量 Reservoir Volume(L)		7.5	12	25	40	40
送料管內徑 Conveying Tube Inner Diameter(mm)		φ38	φ51	φ51	φ63	φ63
配料送管 Specification Of The Attached Hoses(mm)		φ38mmx8m 1Pcs	φ51mmx10m 1Pcs	φ51mmx10m 1Pcs	φ63mmx15m 1Pcs	φ63mmx15m 1Pcs
外形尺寸 Dimension(cm)	主機 Main Frame	42x37x120	42x37x120	50x45x123	58x60x170	58x60x170
	儲料桶 Hopper	43x32x52	43x32x52	40x30x102	40x30x102	40x30x102
淨重約 Approx.Net Weight(Kg)	主機 Main Frame	65	68	90	135	140
	儲料桶 Hopper	6	6	10	12	12

參數中的輸送能力及吸料揚程是以ABS原料堆積密度約0.65kg/L，直徑為3-5mm塑膠原料顆粒為測試材料以垂直高度4m，水平距離5m為測試標準所得。實際參數根據原料比重、形狀及輸送長度、高度、管路特性、參數設定等因素而改變。

The above parameters for conveying capacity and loading distance is based on ABS raw materials accumulation density approx. 0.65kg/L, with 3-5mm diameter of plastic materials particles as testing samples, with vertical high 4m and horizontal distance 5m as testing standard to get results. The exactly parameter would not be the same as per different plastic proportion, figure, conveying length and height and pipeline feature etc.

吸料機在輸送熱料時，料管需選配耐160度高溫料管。

Heat-resistant(160) pipes should be used when conveying hot material.

產品規格若有改變，恕不另行通知。We reserve the right to change specifications without prior notice.

Automatic powder suction machine

自動吸粉機



特點 Features

- 此機適用於假比重0.5-3g/cm³,無粘性的粉粒體物料, 主要用于食品、化工、塑料行業;
- 設有脈動高壓噴洗功能;
- 採用磁簧開關, 感應靈敏, 質量穩定;
- 主機採用高壓風機, 體積小, 噪音低, 壽命長。
- This machine is suitable for pseudo specific gravity of 0.5-3g/cm³ and non cohesive powder material, mainly for food, chemical and plastic industries ;
- Equipped with pulsating high pressure jet washing function;
- It adopts magnetic reed switch, which is sensitive and stable in quality;
- The main engine adopts red high pressure blower, small size, low noise and long service life.

規格參數表 Specifications Parameters of All Models

型號 Model	功率 Power (kw)	輸送能力 (kg/h) Transmission capacity	吸料揚程 (m) Suction lift	靜風壓 (mmaq) Static pressure	儲料鬥容量 (L) Hopper capacity	送料管內徑 Feeding tube diameter	配管 Piping
HPL-3HP	2.2	300	4	2000	24	Φ51	Φ51mmx4mm 2pcs
HPL-5HP	3.75	500	4	2000	24	Φ51	Φ51mmx4mm 2pcs
HPL-7.5HP	5.5	800	4	2800	24	Φ51	Φ51mmx4mm 1pcs Φ63mmx4mm 1pcs

Standard water temperature controller

水式模温機



特點 Features

- 採用P.I.D.控溫, 溫差誤差在±0.1度, 恒溫時間長, 效率高, 節省能源。
- 六大保護功能: 開機自動排氣、關機自動降溫、熱點偶斷偶報警、電源缺相、異相保護、水泵保護、過熱保護、缺油等保護。
- 液晶屏直接顯示實測溫度和設定溫度。
- 操作直觀、簡易、維修方便。
- 不銹鋼板制成容桶, 耐腐蝕、不漏水(油), 壽命長。
- 回油型可以方便快捷的實現傳熱油的回收。
- 外形美觀, 節省空間。
- P.I.D temperature control with deviation ±0.1°C, long constant temperature time, with high efficiency and energy saving.
- Six protective functions: auto-exhaust starting up, auto-cooling shutting down, thermocouple broken alarm, power phase shortage, out-phase protection, water-pump protection, over-heating protection and oil shortage protection etc.
- LCD shows the actual and set temperatures-direct and visual operations.
- Visual and easy operations, easy to maintain.
- Stainless steel tank—durable without leakage or rust.
- Circumfluence design enables recollection of diathermanous oil, easily and rapidly.
- Exquisite appearance with delicate size.

規格參數表 Specifications Parameters of All Models

型號 Model	傳熱媒體 Transfer Medium	最高溫度 Max.Temp	泵功率 Pump(KW)	泵流量 Pump Flow(L/min)	泵揚程 Pump Flow(L/min)	發熱功率 Heating Power(KW)	熱媒出入口徑 Inlet/Outlet Diameter	外形尺寸 Dimension(mm)	淨重約 Approx.Net Weight(KG)
HJW-120506	清水 Water	120°C	0.37	42	28	6	12mm×2	720×400×634	45
HJW-120509			0.37	42	28	9	12mm×4	720×400×634	46
HJW-121009			0.75	56	38	9	12mm×4	720×400×634	48
HJW-121012			0.75	56	38	12	12mm×4	720×400×634	50
HJW-122018			1.5	160	27	9x2	1.5"×1	830×370×694	65
HJW-123024			2.2	315	26	12x2	1.5"×1	990×450×1000	110
HJW-125036			3.75	385	28	12x3	2"×1	990×450×1000	120
HJW-125060			3.75	385	28	12x5	2"×1	990×450×1000	135

備註: 1. 為確保加熱溫度的穩定性, 冷卻水壓力不得低於2bar, 但亦不得超過5bar

2. 泵浦參數測試條件: 50Hz電源, 20t 純淨水 (最大流量和最大壓力允許±10%的偏差)

3. 機器電壓規格為: 3<t>, 400VAC, 50Hz

Note: 1.In order to ensure the stability of heating temperature, the pressure for cooled water must be within 2-5 bar.

2.The testing condition for pumping parameter: 50HZ power supply, 20T purified water (the deviation between the max.pressure and max.flux allows±10% tolerance.)

3.The voltage specification for machine is: 3<t>, 400VAC, 50Hz

High temperature water mtc

高温水式模温機



特點 Features

- 微電腦模式控制，操作簡單易懂，採用全數位P.I.D分段式控溫系統，控溫精度達到±0.1℃
- 採用高效率水循環泵浦，能適用於精密模具及小直徑模具回路中的控溫需求，實現精密控溫和高效率熱交換
- 具有高壓保護、超溫保護、進水壓力過低保護、安全泄壓裝置，自動補水及開機排氣功能，開機自動降溫等保護功能。
- 內部主管路採用304不銹鋼無縫管製造
- 溫控範圍：180℃以內（可選用磁力泵）
- 採用間接冷卻，控溫更為準確，快速達到熱交換效果。
- 選用磁力泵浦，性能更溫定，泵浦無滲漏的可能。
- 可選配水流分布器與鐵弗龍管。
- 安全保護完善，故障現實，易于維修保養。
- 隔離式電器控制箱，延長電器使用年用。

- Adopted microcomputer controller, easy to operate. P.I.D. multi-stage temperature control system can maintains an accuracy of ±0.1℃.
- Adopted with high efficiency water cycle pump, suitable for precise moulds and the temperature requirement for mold loop with minor diameter, can achieve precise temperature controller and high efficient heat exchange.
- Multiple safety devices including high-pressure protection, overheat protection, inlet water pressure deficit protection, safety pressure relieving, automatic water supplying, air exhausting and automatic shutdown cooling protection function.
- Main pipes are made of uni-body 304 stainless steel.
- Temperature control range within 180℃ (Optional for magnetic pump).
- Adopts indirect cooling method, which makes temperature controller more precise and realizes fast heat exchange.
- Adopts magnetic pump with stable performance and no leakage
- Water manifolds and Teflon hose as optional.
- Sufficient safety protection and visible alarm, easy for maintenance.
- Isolated box type electric control provides long life time service.

規格參數表 Specifications Parameters of All Models

型號 Model	單位 Unit	HJW-160506	HJW-161009	HJW-161012	HJW-181006	HJW-181509	HJW-181512
溫控範圍 Temp. Control Range	℃	160℃			180℃		
溫控精度 Temp. Control Accuracy	℃	P.I.D ±0.1℃					
電源 Power Supply		AC3ϕ 380V/50HZ					
傳熱媒體 Heat Transfer Medium		水 Water					
冷卻方式 Cooling Method		間接冷卻 Indirect Cooling					
加熱功率 Heating Power	KW	6	9	12	6	9	12
泵浦馬達 Pump Power	KW	0.37	0.75	0.75	0.75	1.1	1.1
最大泵浦流量 Max. Pump Flow	L/min	42	135	135	135	60	60
最大泵浦壓力 Max. Pump Pressure	KG/cm ²	2	2.5	2.5	3	5	5
警報功能 Alert Function		Phase-Missing/Water Insufficient/Over-Heat/Over Current					
冷卻水配管 Circulating Water Pipe	mm	12	12	12	12	12	12
循環水配管 Circulating Water Pipe	inch	(2x2) 3/8	(4x4) 3/8	(4x4) 3/8	(2x2) 3/8	(4x4) 3/8	(4x4) 3/8
外形尺寸 Dimension(LxWxH)	mm	790x400x760	790x400x760	790x400x760	790x400x760	790x400x760	790x400x760
淨重約 Approx. Net Weight	KG	76	80	80	76	83	83

- 備注：1、為確保加熱溫度的穩定性，冷卻水壓力不得低於2bar，但亦不得超過5bar
2、泵浦參數測試條件：50Hz電源，20t 純淨水（最大流量和最大壓力允許±10%的偏差）
3、機器電壓規格為：3ϕ，400VAC，50Hz

- Note: 1. In order to ensure the stability of heating temperature, the pressure for cooled water must be within 2-5 bar.
2. The testing condition for pumping parameter: 50Hz power supply, 20T purified water (the deviation between the max. pressure and max. flux allows ±10% tolerance.)
3. The voltage specification for machine is: 3ϕ, 400VAC, 50Hz

Standard oil temperature controller

油式模温機



特點 Features

- 採用P.I.D.控溫，溫差誤差在±0.1度，恒溫時間長，效率高，節省能源。
- 六大保護功能：開機自動排氣、開機自動降溫、熱點偶斷偶報警、電源缺相、異相保護、水泵保護、過熱保護、缺油等保護。
- 液晶屏直接顯示實測溫度和設定溫度。
- 操作直觀、簡易、維修方便。
- 不銹鋼板製成容桶，耐腐蝕、不漏水（油），壽命長。
- 回油型可以方便快捷的實現傳熱油的回收。
- 外形美觀，節省空間。

- P.I.D temperature control with deviation ±0.1℃, long constant temperature time, with high efficiency and energy saving.
- Six protective functions: auto-exhaust starting up, auto-cooling shutting down, thermocouple broken alarm, power phase shortage, out-phase protection, water-pump protection, over-heating protection and oil shortage protection etc.
- LCD shows the actual and set temperatures—direct and visual operations.
- Visual and easy operations, easy to maintain.
- Stainless steel tank—durable without leakage or rust.
- Circumfluence design enables recollection of diathermanous oil, easily and rapidly.
- Exquisite appearance with delicate size

規格參數表 Specifications Parameters of All Models

型號 Model	傳熱媒體 Transfer Medium	最高溫度 Max. Temp	泵功率 Pump(KW)	泵流量 Pump Flow(L/min)	泵揚程 Pump Flow(L/min)	發熱功率 Heating Power(KW)	熱媒出入口徑 Inlet/Outlet Diameter	外形尺寸 Dimension(mm)	淨重約 Approx. Net Weight(KG)
HJO-200506	傳熱油 Heat-Transfer Oil	200℃	0.37	33	22	6	3/8"×2	720×400×634	52
HJO-200509			0.37	33	22	9	3/8"×4	720×400×634	55
HJO-201012			0.75	45	30	12	3/8"×4	720×400×634	55
HJO-202018			1.5	128	21	9x2	1.5"×1	830×370×694	68
HJO-203024			2.2	252	21	12x2	1.5"×1	990×450×1000	110
HJO-205036			3.75	308	22	12x3	2"×1	990×450×1000	112
HJO-205060			3.75	308	22	12x5	2"×1	990×450×1000	135

備注：機器電壓規格為：3ϕ，400VAC，50Hz Note: The voltage specification for machine is: 3ϕ, 400VAC, 50Hz

High temp oil heater

高温油式模温機

特點 Features

- 防爆裝置(選購)
- 吹氣回油功能(選購)
- 回油溫度顯示表
- 開機自動排氣功能
- 加熱功率切換功能
- 負壓系統運轉(選購)
- RS485通訊功能, 實現自動化管理(選購)
- 關機延時冷卻功能(選購)
- 隔離式電器控制箱, 延長電器使用年限
- 熱油BY-PASS泄壓回路
- 多點溫度控制機組可訂作
- 油泵馬力和加熱功率可訂作
- 電器採用OMRON, FUJI, TE, LS, MOELLER, ABB, WEST.
- 溫度控制範圍: 進水溫度+45°C→300°C
- 通過CE認證
- 不銹鋼一體管路, 減少管阻及銹垢
- 控制方式: 採用進口微電腦或(選購)PLC控制
- 安全保護完善, 故障顯示, 維修、保養無需專業人員



- Explosion-proof equipment(optional)
- Air blowing and return oil return function(optional)
- Thermometer for return oil
- Automatic air-exhausting function after startup
- Switchover of heating power
- Negative-pressure system (optional)
- RS485 communication function for automated management (optional)
- Shutdown immediate cooling function (optional)
- Isolated electric box for longer services lives of electric appliances!

- BY-PASS pressure release loop for hot oil
- Customizable multi-point temperature control unit
- Customizable horsepower and heating power of oil pump
- Brands OMRON, FUJI, TE, LS, MOELLER, ABB and WEST for electric appliances
- Range of temperature control: +45°C→300°C for incoming water
- CE certificate
- Stainless steel integrated pipelines for less pipe resistance and rust
- Control mode: imported microcomputer or PLC (optional)
- Perfect safety protection, fault display, easy repair and maintenance even free of professionals

規格參數表 Specifications Parameters of All Models

機型 Model	單位 Unit	HJO-301012	HJO-302018	HJO-302024	HJO-303036	HJO-305048
溫控範圍 Temp. Control Range	°C	300°C				
溫控精度 Temp. Control Accuracy	°C	P.I.D. ±0.1°C				
電源 Power Supply		AC3 380V 50HZ				
傳熱媒體 Heat Transfer Medium		導熱油 Heat Transfer Oil				
冷卻方式 Cooling Method		間接冷卻 Indirect Cooling				
加熱能量 Heating Capacity	KW	12	9x2	12x2	12x3	12x4
泵浦馬力 Pump Power	HP	1	2	2	3	5
最大泵浦流量 Max.Pump Flow	L/min	50	83	83	165	480
最大泵浦壓力 Max.Pump pressure	KG/cm ²	2	2.5	2.5	2.5	3
儲油量 Oil Tank Capacity	Liter	20	30	30	30	30
警報功能 Alert Function		缺相/缺水/超溫/過載 Phase-Missing/Water Insufficient/Over-Heat/Over Current				
冷卻水配管 Cooling Water Pipe	mm	12	12	12	12	12
循環油配管 Circulating Oil Pipe	inch	(4x4)3/8	(1x1)	(1x1)	(1x1)	(1x1)
外形尺寸 Dimension(L*W*H)	mm	1325x560x1110	1325x560x1110	1325x560x1110	1325x560x1110	1325x560x1110
淨重約 Approx.Net Weight	KG	205	210	215	220	225

備注: 產品規格若有改變, 恕不另行通知。 Note: We reserve the right to change specifications without prior notice

High glossy temperature controller

高光蒸汽模温機

高光蒸汽模温控制機簡介

高光蒸汽輔助成型控制機技術是采用高溫蒸汽, 當注塑機合模後注入高溫蒸汽, 首先把模具溫度提高一個設定溫度值, 然後開始給模腔注射塑膠, 在注塑機完成保壓後迅速注入冷卻水或冷凍水, 使之模具在短時間內降到一個設定的溫度值後開模, 再向模具吹入空氣把殘餘的冷水吹走, 完成一個周期的注塑過程。通過這種迅速冷熱的方式控制塑料的成型可以完全解決塑料件的外觀缺陷, 大大提高生產效率。

High-gloss steam mold temperature control unit introduction

High-gloss steam mold temperature control unit provide high-temperature steam, when clamping the mold, the high temperature steam is injected into the injection, the mold temperature is increase to a set temperature value, then inject the plastic into the injection cavity. Inject cooling water or chilled water rapidly after the completion of the injection molding machine holding pressure, so that the mold can open after the mold temperature comes down to a set value within a short period of time, blow air into the mold to blow away the remnants cold water, completing a injection process cycle control. through such rapid hot and cold plastic molding can completely solve the appearance of defects of the plastic parts, improve production efficiency.



特點 Features

- 可完全清除產品表面夾水紋, 溶接痕, 銀絲紋。
- 可以解決塑料產品表面縮水問題。
- 提高產品表面光潔度, 使高光產品表面光潔度可達到鏡面效果。
- 免去產品後續的表面噴繪加工處理, 響應環保, 提高成品率20-30%。
- 在速冷速熱的情況下, 使成型周期大大縮短。
- 觸摸式計算機控制, 操作簡單。
- 全封閉循環系統控制輸入輸出溫度的檢測, 以模具實際溫度回饋PLC, 數彩圖變化顯示, 確保輸出準確穩定。
- 高溫蒸汽, 冷水, 空氣溫度及壓力六項報警, 用時間和動作與注塑機信號互鎖。
- 單變路模具溫度檢測(可選), 輸入輸出管道採用不銹鋼管, 多組輸入輸出接口。

- Remove seam trace, wrinkle and silver marks from product surface.
- Eliminate shrinkage of plastic product surface thoroughly.
- Increase product surface smoothness just like a mirror surface.
- Do not need spray paint processing for product, and increase the yield of finished product between 20 to 30%.
- Touch type computer control, easy to operate.
- Full-closed loop system to control input and output temperature detection, feed back actual temperature of the mold to PLC, indicate digital color figure change, and assure correct and stable output.
- High temperature water, cool water, air temperature and pressure alarms, injection molding, Machine signal inter lock with time and action;
- Double-way mold temperature detection, input and output pipe available in 40" stainless steel, 12 groups of input and output interfaces.

規格參數表 Specifications Parameters of All Models

項目 ITEM	單位 UNIT	HFCH-1600CH
電源 Power supply	v	3 φ /380v/50HZ
總功率 Power	kw	3.06
控制方式 Control mode		電腦PLC處理器+人機界面觸摸控制 Computer PLC processor + man-machine interface touch control
冷熱轉換速度 Hot-cold conversion speed	s	15-50
冷卻水泵功率 Cooling water pump power	kw	3.0
冷卻水進出口口徑 Cooling water inlet/outlet diameter	inch	1.5
蒸汽入口口徑 Steam inlet diameter	inch	1.5
蒸汽循環系統口徑 Steam circling system diameter	inch	1.5(3/8x12)
整機參考尺寸 Size	mm(LxWxH)	1375x550x1570
重量 Weight	kg	220



Two-in-one mtc

雙溫一體模溫機

特點 Features

- 全新設計、占地面積小、功能完善
- 雙機獨立控制溫度，適合上下膜不同溫度的需要，也可同時控制不同溫度的兩臺主機
- 外形人性化設計，操作使用方便快捷，維修、拆裝更加合理化。
- 內部管路設計簡潔、順暢，結構緊湊，有效減少能量的損失。
- 電器同時熱裝置有效分離，隔熱效果好，避免高溫對電器造成的損壞。
- Newly designed, small footprint and multi-functional.
- Separate control—available for maintaining two moulds or two machines with different or individual settings.
- Easy to operate and maintain, with exquisite exterior.
- Well-constructed interior pipelines with concise and well-knit designation for energy saving.
- Heating parts separated from other components to avoid damage caused by over-heat.



規格參數表 Specifications Parameters of All Models

型號 Model	傳熱媒體 Transfer Medium	最高溫度 Max. Temp	泵功率 Pump(KW)	泵流量 Pump Flow(L/min)	泵揚程 Loading Distance(m)	發熱功率 Heating Power(KW)	熱媒出入口徑 Inlet/Outlet Diameter	外形尺寸 Dimension (mm)	淨重約 Approx. Net Weight
HJW-120506S	清水 Water	120°C	0.37x2	35	30	6x2	12mmx4	739x580x650	98
HJW-120509S			0.37x2	35	30	9x2	12mmx8	739x580x650	112
HJW-121012S			0.75x2	50	30	12x2	12mmx8	739x580x650	125
HJW-121009S			0.75x2	50	30	9x4	12mmx1	739x580x650	150
HJW-122012S			1.5x2	80	45	12x4	12mmx1	739x580x650	180
HJW-123012S			2.2x2	200	30	12x6	1.5"x1	1016x650x740	190
HJO-200506S	傳熱油 Heat-Transfer Oil	200°C	0.37x2	35	30	6x2	12mmx4	739x580x650	98
HJO-200509S			0.37x2	35	30	9x2	12mmx8	739x580x650	112
HJO-201012S			0.75x2	50	30	12x2	12mmx8	739x580x650	125
HJO-201009S			0.75x2	50	30	9x4	12mmx1	739x580x650	150
HJO-202012S			1.5x2	80	45	12x4	12mmx1	1016x1150x740	180
HJO-203012S			2.2x2	200	30	12x6	1.5"x1	1016x1150x740	190

備註：產品規格若有改變，恕不另行通知。 Note: We reserve the right to change specifications without prior notice

Dual-use (hot/cold) chillers

冷熱兩用控溫機

特點 Features

- 可根據生產所需提供冷卻循環水給設備冷卻或提供熱水進行升溫，同時可將溫度恒定在2°C之間，一鍵操作，轉換方便，升、降溫速度快。
- 主機精選美日全新知名品牌壓縮機，內置安全保護，噪音低，穩定耐用。
- 電氣部分均選用國際品牌“西門子”原廠產品。
- 高效之蒸發器及冷凝器，可節省能源30%以上。
- 保護措施齊全，智能故障指示，蜂鳴報警，自動化程度高，無需專人操作。
- Based on production needs to supply the cooled cycle water or hot water to cooling or heating the machines, easily to shift quickly from cooling and heating process with one-press operation, temperature control maintains within 2°C
- Installed with brand new famous brand compressor from USA and Japan with safety protection inside, which makes low noise and provides long stable durability.
- Electric parts are adopted with original world-class brand SIEMENS.
- High efficient evaporator and condenser could save energy consumption more than 30%.
- With sufficient protections, intelligent fault indication and buzzer alarm, which is high-automatized and requires no dedicated human operations.



規格參數表 Specifications Parameters of All Models

型號 Model	Unit	HLR-305	HLR-510	HLR-610	HLR-810	HLR-1020	HLR-1220	HLR-1530	
制冷量 Cooling Capacity	KW	7.91	12.9	15.22	23.8	30.5	34.3	45	
	Kcal/h	6803	10836	13091	17630	21672	25585	35948	
壓縮機 Compressor	輸入功率/Input Power	KW	2.8	4.5	5.2	3x2	4.5x2	10	4.5x3
	額定功率/Rated Power	HP	3	5	6	4x2	5x2	6x2	5x3
電源 Power		3PH-380V/50HZ(200V/220V/415V/460V 50HZ/60HZ)							
蒸發器 Evaporator	類型/Type	水箱盤管式 (殼管式) Water Tank With Coil(Shell And Tube)							
	水管口徑/Pipe Diameter	inch	1"	1"	1"	2"	2"	2"	2"
冷凍媒體 Refrigerant	類型/Type	R22(R407C/R134a)							
	控制方式 Control Method	KG	毛細管 Capillary Tube	(毛細管)外平衡式熱力膨脹閥 (Capillary) Expansion Value					
冷卻水量/Cooling Water Flow	m³/h	1.36	2.2	2.6	3.5	4.3	5.03	6.8	
風冷冷凝器 Air Condenser	類型/Type	高效紫銅管套鋁翅片+低噪音外轉子風機 Finned Copper Tube + Low Noise Outer Rotor Fan							
	風機功率/Fan Power	W	185x1	135x2	135x2	420x2	420x2	550x2	750x2
水箱容量/Water Tank Capacity	Liter	50	60	60	110	110	110	200	
水泵/Pump	功率/Power	KW	0.37	0.37	0.75	0.75	0.75	0.75	1.5
		HP	0.5	0.5	1	1	1	1	2
	揚程/Distance	m	23	23	35	13	13	13	15
加熱裝置 Heating Device	類型 Type	加熱管 Heating Pipe							
	功率 Power	KW	6	9	9	12	12	18	18
安全保護/Safety Protection		壓縮機過熱保護，過流保護，高低壓保護，超溫保護，流量保護，相序/缺相保護，排氣過熱保護，防凍保護 High and Low Pressure Protection, Overload Protection, Over Temperature, Phase Sequence Protection, etc.							
外形尺寸 Dimensions(L×W×H)	水冷/Water Cooled	mm	960x630x1073	1280x630x1118	1280x630x1118	1550x830x1543	1550x830x1543	1550x830x1543	1850x1000x1640

備註：1、制冷量是依據：冷凍水進出水溫度12°C/7°C，冷卻水進出水溫度20°C/35°C。
2、工作範圍：冷凍水溫度範圍：5°C至35°C；冷凍水進出水溫差：3°C至8°C在環境溫度不高于35°C環境下使用
保留更改以上上述參數或尺寸而卻另行通知的權利

Note: 1. Refrigerating capacity calculated according to: Inlet/outlet chilled fluid temperature: 12°C/7°C. Inlet/outlet cooling water temperature: 30°C/35°C.
2. Working condition: The temperature range of chilled is from 5°C to 35°C. Temperature difference between inlet and outlet chilled is from 3°C to 8°C. It is better to run the chiller while the environmental temperature at or below 35°C.
We reserve the right to modify the above information without prior notice.

Water/Air cooled chiller

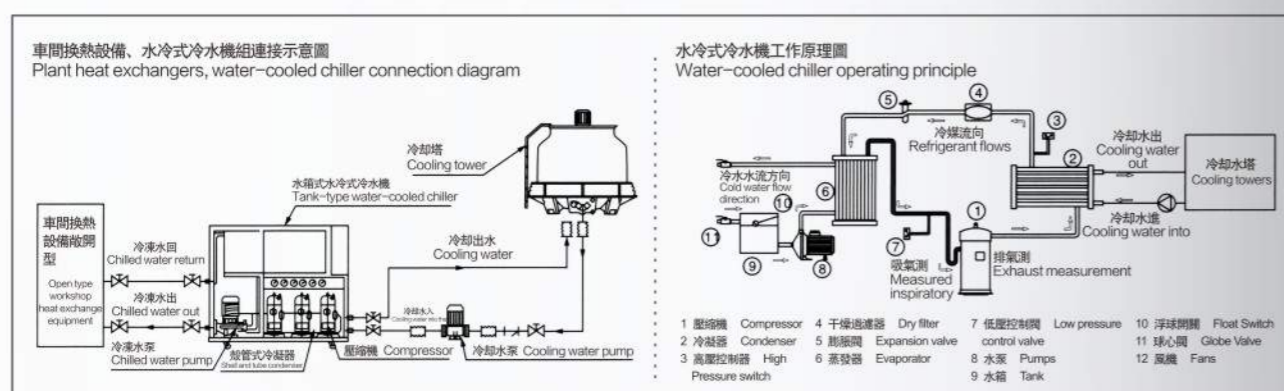
水/風冷式冰水機



特點 Features

- 全新知名品牌壓縮機和高效殼管式冷凝器、蒸發器組合、超強制冷、安靜省電。
- P.I.D.微電腦全功能控制，操作簡便，能精確控制水溫3°C至50°C內。
- 特有全新設計之不銹鋼開放式水箱，清洗、修護方便快捷。
- 內部管路布局合理，有效降低能耗。
- 具有電流過載保護、高低壓制及電子時間延遲等完善的安全保護裝置、異常指示系統。
- 屏幕同時液晶顯示冷水出口、冷水入口和設備設定溫度。
- 有單機、雙機、四機組合，能源效率高。
- 經過工業造型設計，外形美觀、優化人機關係。
- Famous brand new compressors,high efficient shell condensers and evaporators-excellent cooling, quiet with low electric consumption.
- P.I.D. Microprocessor control-easy to operate,accurately maintains temperature range from 3°C to 50°C
- Special open type reservoir tank with stainless steel – easy to clean and maintain.
- Well design and reasonable Pipelines-ensures power supply and saves energy.
- Current-overload protector,high-and-low pressure switches,electronic time delayer,fault display system-Safe and durable.
- Liquid crystal display showing temperatures of outlet and inlet chill water-provides visualized and direct setting.
- Single, double or quadruple compressors combination available-economic and efficient.
- Industrially designed-elegant and economic with friendly human-machine connections.

結構原理圖 Structure Principle Diagram



規格參數表 Specifications Parameters of All Models

型號 Model	Unit	HJW-1	HJW-2	HJW-3	HJW-4	HJW-5	HJW-8	HJW-10	
制冷量	KW	2.77	5.28	7.91	12.9	15.22	23.8	30.5	
Cooling Capacity	Kcal/h	2382	4541	6803	11094	13091	20468	26230	
壓縮機	輸入功率/Input Power	0.89	1.77	2.8	4.5	5.2	3x2	4.5x2	
	額定功率/Rated Power	1	2	3	5	6	4x2	5x2	
Compressor	HP								
電源 Power		1PH-220V/50HZ			3PH-380V/50HZ(200V/220V/415V 50HZ/60HZ)				
蒸發器	類型/Type	水箱盤管式 (殼管式) Water Tank With Coil(Shell And Tube)							
Evaporator	水管口徑/Pipe Diameter	6"	6"	1"	1"	1"	2"	2"	
冷凍媒體	類型/Type	R22							
Refrigerant	填充量/Quantity	1.6	1.8	2	2	2.5	4	5	
水冷冷凝器	類型/Type								
Water Condenser	水管口徑/Pipe Diameter			1"	1"	1"	2"	2"	
冷却水量/Cooling Water Flow	m ³ /h	0.476	0.908	1.36	2.22	2.6	3.95	4.42	
風冷冷凝器	類型/Type	高效紫銅管套鋁翅片式+低噪音外轉子風機 Finned Copper Tybe + Low Noise Outer Rotor Fan							
Air Condenser	風機功率/Fan Power	85x1	85x1	135x1	135x2	135x2	420x2	420x2	
水箱容量/Water Tank Capacity	Liter	20	20	50	60	60	110	110	
水泵/Pump	功率/Power	0.37	0.37	0.37	0.37	0.75	0.75	0.75	
	揚程/Distance	HP	0.5	0.5	0.5	0.5	1	1	
	揚程/Distance	m	23	23	23	23	35	13	
	流量/Flow Rate	L/min	100	100	100	100	110	200	
安全保護/Safety Protection		壓縮機過熱保護, 過流保護, 高低壓保護, 超溫保護, 流量保護, 相序、缺相保護, 排氣過熱保護, 防凍保護 High And Low Pressure Protection, Overload Protection, Over Temperature Protection, Phase Sequence Protection, etc.							
外形尺寸	水冷/Water Cooled	mm	800 × 490 × 898		935 × 500 × 883	935 × 500 × 883	935 × 500 × 883	1270 × 650 × 1413	1270 × 650 × 1413
	風冷/Air Cooled	mm		795 × 566 × 1058	960 × 630 × 1073	1280 × 630 × 1118	1280 × 630 × 1118	1550 × 830 × 1543	1550 × 830 × 1543
Dimensions(L × W × H)									

型號 Model	Unit	HJW-12	HJW-15	HJW-20	HJW-25	HJW-30	HJW-40	HJW-50	
制冷量	KW	34.3	45	61	69	92	122	136	
Cooling Capacity	Kcal/h	29498	38700	52460	59340	79120	104920	117476	
壓縮機	輸入功率/Input Power	10	4.5x3	9x2	10x2	9x3	9x4	9.4x4	
	額定功率/Rated Power	HP	6x2	5x3	10x2	12.5x2	10x3	10x4	12.5x4
Compressor									
電源 Power		1PH-220V/50HZ			3PH-380V/50HZ(200V/220V/415V 50HZ/60HZ)				
蒸發器	類型/Type	水箱盤管式 (殼管式) Water Tank With Coil(Shell And Tube)							
Evaporator	水管口徑/Pipe Diameter	2"	2"	2.5"	2.5"	3"	3"	3"	
冷凍媒體	類型/Type								
Refrigerant	填充量/Quantity	5	7.5	11	11	12	18	18	
水冷冷凝器	類型/Type								
Water Condenser	水管口徑/Pipe Diameter	2"	2"	2.5"	2.5"	3"	3"	3"	
冷却水量/Cooling Water Flow	m ³ /h	5.03	7.1	8.84	10.06	13.6	17.75	21.9	
風冷冷凝器	類型/Type	高效紫銅管套鋁翅片式+低噪音外轉子風機 Finned Copper Tybe + Low Noise Outer Rotor Fan							
Air Condenser	風機功率/Fan Power	550x2	750x2	550x3	750x3	800x3	800x3	800x4	
水箱容量/Water Tank Capacity	Liter	110	200	350	350	420	420	420	
水泵/Pump	功率/Power	0.75	1.5	1.5	2.2	2.2	4	4	
	揚程/Distance	HP	1	2	2	3	3	5	
	揚程/Distance	m	13	15	15	16	16	16	
	流量/Flow Rate	L/min	200	360	360	650	650	700	
安全保護/Safety Protection		壓縮機過熱保護, 過流保護, 高低壓保護, 超溫保護, 流量保護, 相序、缺相保護, 排氣過熱保護, 防凍保護 High And Low Pressure Protection, Overload Protection, Over Temperature Protection, Phase Sequence Protection, etc.							
外形尺寸	水冷/Water Cooled	mm	1270 × 650 × 1413	1270 × 750 × 1413	1680 × 880 × 1650	1880 × 880 × 1650	1880 × 880 × 1650	2150 × 1080 × 1950	2150 × 1080 × 1950
	風冷/Air Cooled	mm	1550 × 830 × 1543	1850 × 1000 × 1640	2150 × 1000 × 1820	2400 × 1150 × 1740	2600 × 1150 × 1940	2150 × 2000 × 1820	2400 × 2250 × 1840
Dimensions(L × W × H)									

備註: 1. 制冷量是依據: 冷凍水進出水溫度12°C/7°C、冷却水進出水溫度30°C/35°C。
2. 工作範圍: 冷凍水溫度範圍: 5°C至35°C; 冷凍水進出水溫差: 3°C至8°C。冷却水溫度範圍: 18°C至37°C; 冷却水進出水溫差3.5°C至10°C。保留更改上述參數或尺寸而不另行通知的權利。
Note: 1. Cooling Capacity is calculated based on: inlet/outlet chilled fluid temperature: 12°C/7°C, inlet/outlet cooling water temperature: 30°C/35°C.
2. Working condition: Chilled fluid temperature: from 5°C to 35°C. Inlet/outlet chilled fluid Temperature difference: from 3°C to 8°C. Cooling water temperature: from 18°C to 37°C, inlet/outlet cooling water Temperature difference: from 3.5°C to 10°C. We reserve the right to modify above information without prior notice.

Water cooled screw chiller

開放式冷水機

冷水機應用於塑料加工機械成型模具冷卻，能大大提高塑料製品表面光潔度，減少塑料製品表面紋痕和內應力，使產品不縮水、變形，便於塑料製品的脫模、加速產品定型、從而極大地提高塑料成型機的生產效率。

The water chiller is to provide a cooling process in plastic molding, to improve quality of molded products and shorten period of injection molding cycles.



特點 Features

- 全新知名名牌壓縮機和高效殼管式冷凝器、蒸發器組合、超強制冷、寧靜省點。
- P.I.D.微電腦全功能控制，操作簡便，能精確控制水溫3°C至50°C內。
- 特有全新設計之不銹鋼開放式水箱，清洗、維護方便快捷。
- 內部管路布局合理，有效降低能耗。
- 具有電流過載保護、高低壓制及電子時間延遲等完善的安全保護裝置、異常指示系統。
- 屏幕同時液晶顯示冷水出口、冷水入口和設備設定溫度。
- 有單機、雙機、四機組合，能源效率高。
- 經過工業造型設計，外形美觀、優化人機關係。
- Famous brand new compressors, high efficient shell condensers and evaporators – excellent cooling, quiet with low electric consumption.
- P.I.D. Microprocessor control – easy to operate, accurately maintains temperature range from 3°C to 50°C
- Special open type reservoir tank with stainless steel – easy to clean and maintain.
- Well design and reasonable Pipelines – ensures power supply and saves energy.
- Current-overload protector, high-and-low pressure switches, electronic time delay, fault display system – Safe and durable.
- Liquid crystal display showing temperatures of outlet and inlet chill water – provides visualized and direct setting.
- Single, double or quadruple compressors combination available – economic and efficient.
- Industrially designed – elegant and economic with friendly human-machine connections.

規格參數表 Specifications Parameters of All Models

型號 Model	Unit	HJW-60	HJW-70	HJW-80	HJW-100	HJW-120	HJW-150	HJW-180	HJW-200	HJW-240	
制冷量	KW	198	231	264	330	396	495	660	660	792	
Cooling Capacity	Kcal/h	170280	198660	227040	283800	340560	425700	567600	567600	624360	
壓縮機 Compressor	功率 Power	45	52.5	60	75	90	112	150	150	180	
	類型 Type	半封閉螺桿式 Semi-en closed screw type									
電源 Power		3CD-50HZ-380V									
蒸發器 Evaporator	類型 Type	殼管式 Shell and tube									
	冷凍水流量 Flow	m ³ /h	36	42	48	60	72	90	120	120	144
冷凍媒體 Refrigerant	進水管 Pipe	DN	80	80	80	100	100	125	125	125	150
	類型 Type	R22									
水冷凝器 Water Condenser	類型 Type	殼管式 Shell and tube									
	冷凍水流量 Flow	m ³ /h	36	42	48	60	72	90	120	120	144
安全保護/Safety Protection	進水管 Pipe	DN	80	80	80	100	100	125	125	125	150
	壓縮機過熱保護，過流保護，高低壓保護，超溫保護，流量保護，相序、缺相保護，排氣過熱保護，防凍保護 High And Low Pressure Protection, Overload Protection, Over Temperature Protection, Phase Sequence Protection, etc.										
外形尺寸 (Dimension)	cm	230x60x155	230x60x155	260x65x160	310x65x170	330x70x175	350x75x180	420x125x150	420x110x190	460x120x200	
機器淨重約 (Machines weight)	kg	1070	1100	1180	1260	1640	1680	1720	2520	2970	

備註：1、制冷量是依據：冷凍水進出水溫度12°C/7°C，冷卻水進出水溫度30°C/35°C。
2、工作範圍：冷凍水溫度範圍：5°C至35°C；冷卻水進出水溫度差：3°C至8°C。冷卻水溫度範圍：18°C至37°C；冷卻水進出水溫度差3.5°C至10°C。
保留更改上述參數或尺寸而不另行通知的權利。

Note: 1. Cooling Capacity is calculated based on: inlet/outlet chilled fluid temperature: 12°C/7°C, inlet/outlet cooling water temperature: 30°C/35°C.
2. Working condition: Chilled fluid temperature: from 5°C to 35°C, inlet/outlet chilled fluid Temperature difference: from 3°C to 8°C.
Cooling water temperature: from 18°C to 37°C, inlet/outlet cooling water Temperature difference: from 3.5°C to 10°C.
We reserve the right to modify above information without prior notice.

Weighing mixer

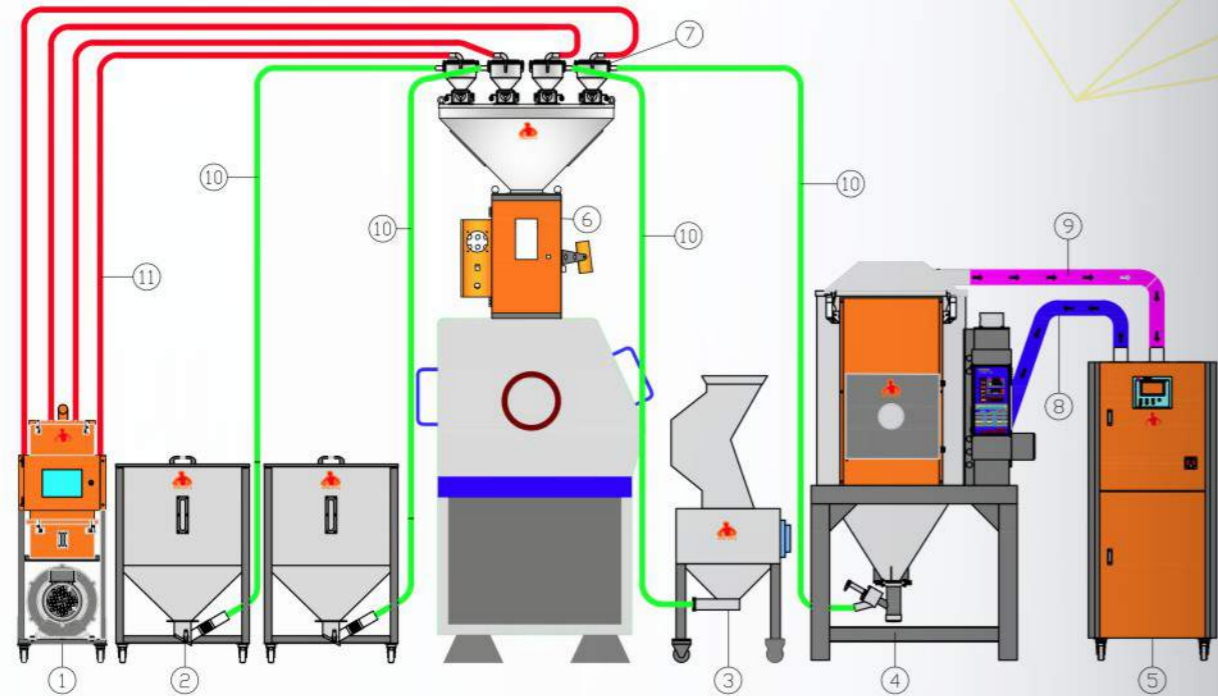
稱重式混料機



特點 Features

- 模塊化可拆卸式結構設計，節省空間與清潔方便；
- 採用通用型PLC控制器，確保性能可靠，維護簡便；
- 採用先進的控制算法，自主優化，自動調校補償及震動防止功能，保證最佳的配料精度；
- 標準機型最多可處理四種組份（六組份以上可定制）；
- 彩色圖形顯示，觸摸屏式操作，多種語言供選擇；
- 具有配方存儲功能，最多可存儲100組以上配方；
- 分級安全密碼控制與報警歷史記錄功能；
- 控制器標準配置USB2.0接口，可將混料配比數據保存到U盤中，便於生產質量控制；
- 具備聲、光報警器，便於設備員快速準確的達到故障機器現場；
- 所有與原料接觸的部分都由不銹鋼材料制成，防止原料被污染；
- 可直接安裝在機器上或選配腳架安裝在機器旁（含氣動式卸料閥）。
- The modularized components can be disassembled for easy cleaning.
- The adopted PLC panel shows reliable performance and easy maintenance.
- The adopted functions such as advanced algorithm of controlling, autonomous optimization, automatic calibration and anti-vibration, can ensure the highest accuracy.
- The standard models can process four dosing. (Six-dosing modules can be customized)
- Touch screen operation is achieved with multiple languages option and diagrams with colors.
- Up to 100 recipes can be stored for later use;
- The gravimetric blender is adopted with Multilevel password protection and keep alarm records;
- Standard USB2.0 interface is easy for saving recipe data into flash disk, and hence fulfill the quality control management;
- With sound and flash alarm, operators can be informed shortly and evidently for repairation.
- All raw material contact parts are made of stainless steel, which can prevent the materials being polluted;
- The gravimetric blender can be directly mounted on the injection machine or optional stand frame near the injection machine.

安裝圖 Installation diagram



- ① 吸料机
Auto loader
- ② 儲料桶
Material pipe
- ③ 機邊粉碎機
Online granulator
- ④ 干燥機
Hopper dryer
- ⑤ 除濕機
Homeycomb dehumidifier
- ⑥ 稱重式攪拌計量機
Gravimetric blenders
- ⑦ 微動料斗
Vacuum hopper
- ⑧ 除濕空氣
Dehumidifying air
- ⑨ 循環空氣
Return air
- ⑩ 料管
Material pipe
- ⑪ 吸風管
Vacuum hopper

選配件 Optional components

- 料門低料位警報開關;
- Hopper low material level alarm switch.
- 吸料控制I/O模塊;
- Automatic loading control module.
- 氣動式卸料閥 (用于直接安裝機臺上方平臺或架子);
- Pneumatic slide gate(adapted for injection machine mounting models).
- 腳架、氣動式卸料閥、儲料桶及吸料盒 (適用腳架安裝型);
- Floor stand frame, pneumatic slide gate, storage tank and suction box are adapted for floor mounting models.
- 以太網接口、MODBUS、PROFIBUS通訊模塊, 可實現遠程監控, 并與擠出機、注塑機等主機進行的數據交換。
- Ethernet interface,MODBUS,PROFIBUS communication modules, can fulfill the remote monitoring. They can also transfer data with extrusion machines and injection machines

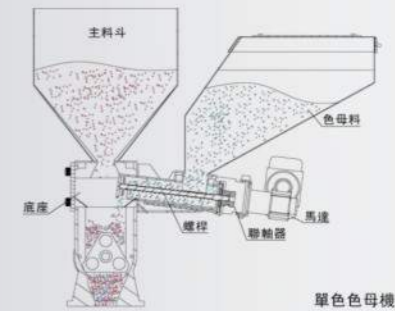
規格參數表 Specifications Parameters of All Models

機型Model	HGB-50	100	200	400	600	800	1200	2000	2500	3000
組數數量Qty of Group number	4	4	4	4	4	4	4	4	4	4
混料能力Mixing capacity(kg/hr)	50	100	200	400	600	800	1200	2000	2500	3000
批次重量Batch weight(kg)	0.6	1.2	2.2	4.5	6	8	12	20	25	30
主料混料範圍main material mixing range(%)	5~100	5~100	5~100	5~100	5~100	5~100	5~100	5~100	5~100	5~100
添加劑混料範圍additive mixing range(%)	0.5~10	0.5~10	0.5~10	0.5~10	0.5~10	0.5~10	0.5~10	0.5~10	0.5~10	0.5~10
主料容積 main hopper volume(L)	18	25	32	45	70	100	130	160	180	230
添加劑容積additive hopper volume(L)	18	25	32	45	70	100	130	160	180	230
攪拌桶容積mixing barrel volume(L)	6	6	20	20	40	40	80	80	100	180
電源規格power supply(V/Hz)	1Φ	1Φ	1Φ	1Φ	1Φ	1Φ	3Φ	3Φ	3Φ	3Φ
總功率total power(kW)	230/50	230/50	230/50	230/50	230/50	230/50	400/50	400/50	400/50	400/50
壓縮空氣compressed air (kg/cm2)	6~8									
噪音max. noise level(dB)	<75									

注:
1) 混合配比誤差是指各組份的設定百分比與實際百分比的差值;
2) 標準閥門不適用於粉體計量;
3) 以上最大處理量和混合配比誤差數據是以堆積密度0.8kg/L直徑3-4mm、數據會根據原料的特性而變化, 如使用不確定物料, 請另行商討。
為3-4 mm的顆粒均勻原料以連續運轉方式測量所得的數據。

Note:
1) Dosing accuracy are refer to each ingredient accuracy
2) standard valves are not suitable powder dosing;
Max .output of each model and dosing accuracy are based on the data from bulk density 0.8, dia. 3-4mm pellets in a test criteria of continuous running.

Volumetric dosers
體積式色母混合機



計量式色母混合機, 可以對塑料原料的1種主料和1-4種色母料或添加劑按比例自動混配, 適用於注塑、擠出或吹塑生產。該系列產品採用混合式步進電機, 并配合專用微電腦控制器, 可精確地計量色母及添加劑的添加比例。此混合機可以與各類成型機信號做連接進而同步運轉, 保證成型產品性能一致性。

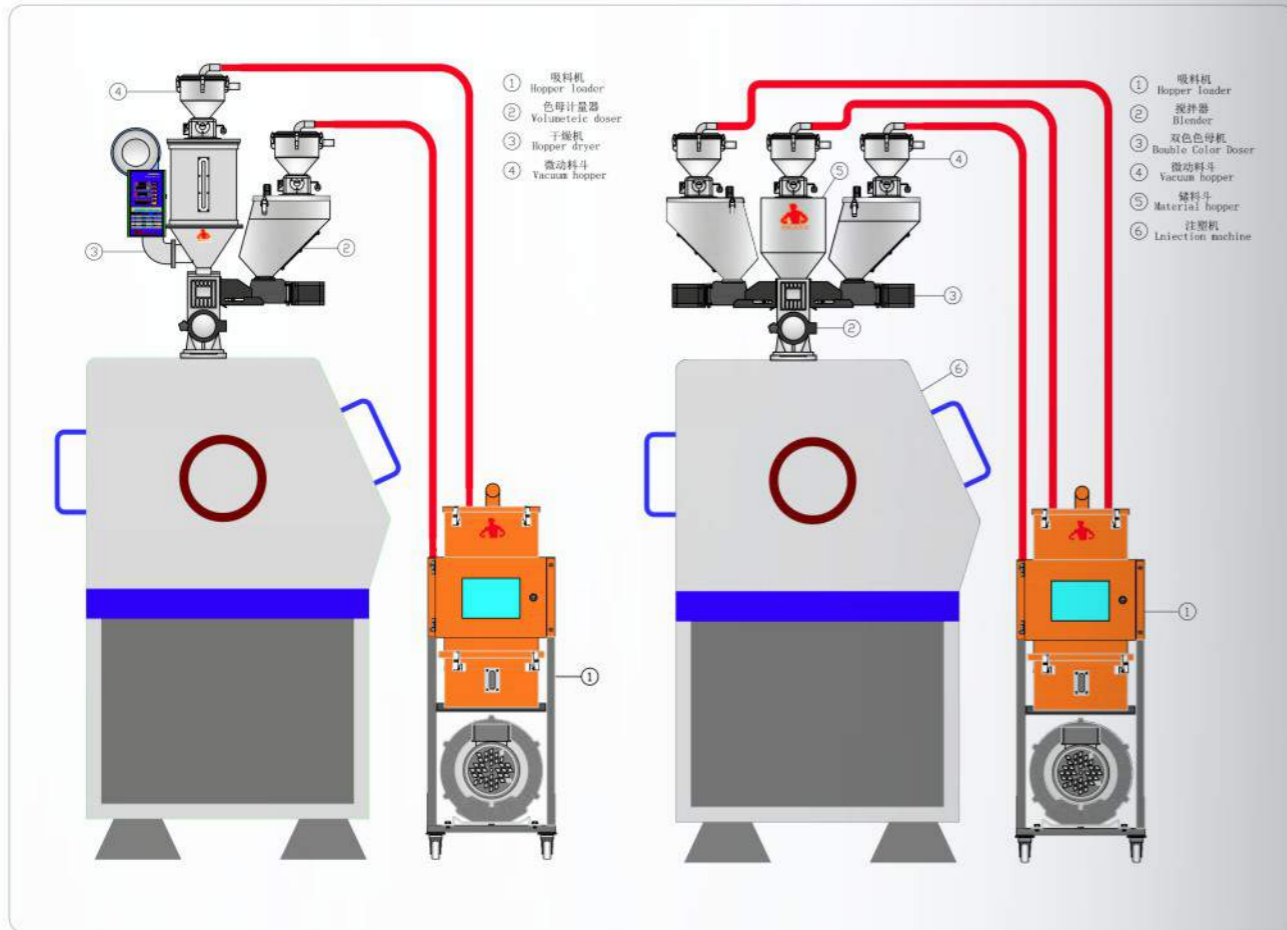
volumetric dosers are designed for auto-proportional mixing of 1 new material and 1-4 kinds of masterbatch / additives for the injection, extrusion and blow-molding production. Each of the dosers is applied with a stepper motor and microcomputer controller. They can accurately calculate the proportion of the masterbatch and additives. This volumetric doser can be connected with any kinds of molding machines and fulfill synchronized operation, which assures the quality of the products.

特點 Features

- 模塊化可拆卸式結構設計, 可快速更換螺桿及套筒;
- 使用高精度混合式步進電機, 計量準確并且輸出量範圍廣;
- 馬達直接驅動, 無減速箱, 壽命長、免維護;
- 採用微電腦控制器, 操作簡單;
- 具有50組配方存取功能, 可快速調用啓動機器;
- 螺桿採用鍍鉻處理, 經久耐用;
- 計量部分可以從底座整體拆除而不會漏料, 底座側面有可視窗裝置, 易觀察原料。

- The modulized components can be disassembled easily and help with screws and sleeves alternation.
- The adopted hybrid stepping motor with can guarantee measurement accuracy.
- The motor drives directly with no gearbox. It sustain longer service life and it is maintenance-free.
- The microprocessor controller is easier for operation.
- The data memory chip can storage up to 50 recipes and operators can select the recipes easily.
- The dosing screws are chrome plated for better durability.
- The dosing section can be removed without granulate leaking form the neckpiece. There is a viewer adopted on the side of the neckpiece.

安裝圖 Installation diagram



規格參數表 Specifications Parameters of All Models

型號 Model	單色機 Single color unit				雙色機 Double color unit
	HSD-16	HSD-24	HSD-33	HSD-50	HSD-16*2
馬達功率 Motor power (kw)	0.1	0.1	0.3	0.3	0.1*2
螺桿外徑 screw dia. (mm)	16	24	33	33	16*2
輸出量 output capacity (kg/hr)	0.5-20	3-60	8-110	15-300	(0.5-20) *2
儲料桶 storage capacity (L)	8	8	15	15	8*2
主原料門 main hopper	選配 optional	選配 optional	選配 optional	選配 optional	標準 standard
攪拌器 mixer	選配 optional	選配 optional	選配 optional	選配 optional	標準 standard
腳架 floor stands	選配 optional	選配 optional	選配 optional	選配 optional	選配 optional
外型 dimensions					
H (mm)	410	410	410	410	410
W (mm)	600	600	600	600	1050
D (mm)	300	300	300	300	300
重量 NW (kg)	25	25	25	25	50

注：
1) "*"表示客戶所選螺桿決定輸出的大小，可參考單色機數據；
例如：HSD-16，輸出量即為0.5-20kg/hr
2) "*"表示螺桿外徑依客戶選型而定；
3) 單色機加裝攪拌器，機型後面加註 "MS"；
4) 以上機型輸出量是以比重為1.2、直徑為2-3mm的色母顆粒以連續運轉方式為測試標準所得的數據；
5) 機器電壓規格為：1Φ，230V，50Hz。

Note:
1) "*" means the output capacity depends on the screw selected, data of the single color doser can be a reference.
For example: SCM-D-12/14, output capacity is 0.15-60 kg/hr.
2) "*" stands for external diameter of screw is up to model selected.
3) Single color doser with screw, add "MS" on the back of model.
4) The output proportion of all models are 1.2, diameter 2-3mm masterbatch in a test criteria of continuous running.
5) Voltage: 1Φ, 230V, 50Hz.

Dry color mixer (high speed)

高速/乾燥混色機



特點 Features

- 集溫度，時間控制於一體，方便各種參數的設定
- 結構合理，操作容易
- 不銹鋼內膽、外殼，清潔方便
- 雙層保溫裝置
- 密封室攪拌，可進行磁化雜質分離（選配）
- 過載保護
- Temperature and timer control in one unit, convenient for parameters setting
- Well-designed structure, easy to operate
- Stainless steel construction inner container, easy to cleaning
- Double layer protection to maintain temperature.
- Mixing in airtight chamber, magnetic separation process (optional)
- Automatic alarm for overload protection

規格參數表 Specifications Parameters of All Models

型號 Model	功率/Power		容量KG Capacity	電壓V Voltage	外形尺寸(cm) Dimension	轉速(R/min) Rotating Speed	淨重量(KG) Approx. Net Weight
	電機 Motor(kw)	加熱 Heat(HP)					
HGG-25	5.5	7.5	25	3803Φ	100×69×124	480	200
HGG-50	7.5	10	50	3803Φ	117×83×135	480	230
HGG-100	15	20	100	3803Φ	134×98×152	480	270
HGG-200	30	40	200	3803Φ	170×130×170	480	700

Vertical color mixer

立式混色機



特點 Features

- 四輪直立式設計，體積小，移動方便
- 配用擺線針輪減速電機，噪音低、持久耐用
- 短時間內完成均勻混料，低耗能，高效率
- 桶蓋、桶底衝壓成型，配合精確，更耐用
- 計時器可在0-30分鐘之間選擇混料時間
- Vertical structure with four-wheeled, small size, removing easily
- Vertical reducer motor adopted ensures low noise and long operation hours
- Fast complete mixing, low energy consumption and high productivity
- Barrel cover and bottom parts formed by pressing, precisely matched and durable
- Mixing time able to set within 0-30 minutes

規格參數表 Specifications Parameters of All Models

型號 Model	功率/Power		容量KG capacity	電壓V Voltage	外形尺寸(cm) Dimension	轉速(R/min) Rotating Speed	淨重量(KG) Approx. Net Weight
	電機 Motor(kw)	加熱 Heat(HP)					
HVM-25	0.75	1	25	3803Φ	72×72×92	85	83
HVM-50	1.5	2	50	3803Φ	83×83×112	85	125
HVM-100	3	4	100	3803Φ	100×100×128	85	180
HVM-150	4	5.5	150	3803Φ	113×113×140	85	270
HVM-200	7.5	10	200	3803Φ	120×120×139	85	313

Horizontal blender

卧式攪拌機



特點 Features

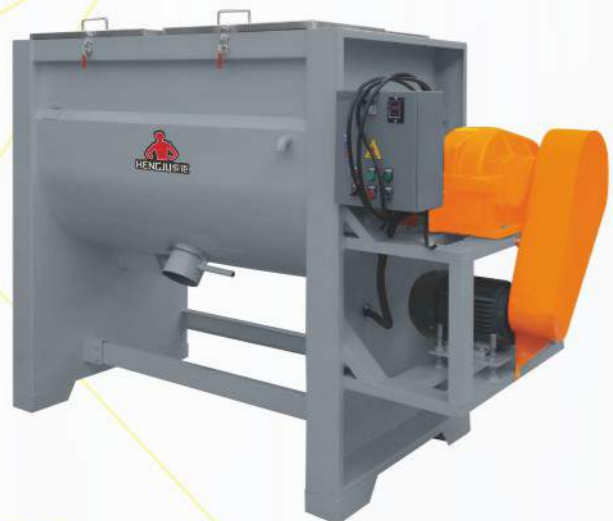
- 料桶及槳葉全不銹鋼製造，清洗容易、避免銹蝕
- 擺線針輪減速機，壽命長，噪音低
- 防護門特殊設計，易于設備保養、維護，特配人梯，投料更方便
- 雙向S形螺旋槳葉，拌料迅速、均勻
- 頂部可視窗口，易于觀察混料情況
- 計時器0-30分鐘任意定時混料
- 可訂做烘幹型或冷卻型攪拌機
- Stainless steel hopper and paddles ,rust free and easy to clean
- Vertical reducer motor,durable and low noise.
- Special designed protection door for easy feeding
- Dual direction "s" spiral paddle,fast and even
- Inspection window on top ,easy for monitor mixing process
- Baking or cooling type model can be customized.

規格參數表 Specifications Parameters of All Models

型號 Model	功率/Power 電機 Motor(kw) 加熱 Heat(HP)	容量KG capacity	電壓V Voltage	外形尺寸(cm) Dimension	轉速(R/min) Rotating Speed	淨重量(KG) Approx.Net Weight	
HHM-100	2.2	100	3803Φ	110×85×130	47	285	
HHM-150	3	150	3803Φ	140×85×130	47	358	
HHM-200	3	200	3803Φ	158×100×140	47	530	
HHM-300	4	300	3803Φ	200×95×150	35	730	
HHM-500	5.5	500	3803Φ	215×105×185	35	1000	
HHM-1000	11	18	1000	3803Φ	290×130×220	12	1500
HHM-2000	15	24	2000	3803Φ	340×140×240	12	2000

Large horizontal mixer

大型卧式攪拌機



規格參數表 Specifications Parameters of All Models

型號 Model	功率/Power 電機 Motor(kw) 加熱 Heat(HP)	容量KG capacity	電壓V Voltage	外形尺寸(cm) Dimension	轉速(R/min) Rotating Speed	淨重量(KG) Approx. Net Weight
HC-JB300W	5.5 7.5	300	3803Φ	2140x1010x1480	23	730
HC-JB500W	7.5 10	500	3803Φ	2310x1190x1750	23	1000
HC-JB1000W	15 20	1000	3803Φ	3060x1280x2270	15	1500

Vertical blender

立式攪拌機



工作原理 Working principle

立式攪拌機的工作是利用螺桿的快速選擇將原料從桶體底部由中心提升至頂端，再以傘狀飛拋散落，回到底部，這樣原料在桶內上下翻滾攪拌，短時間內即可將大量原料均勻的混合完畢。

Vertical stirrers are able to perform even mixture for large volume of materials in short mixing time by utilizing the paddles rotation to gather the materials from the bottom of dump center to the top,shed the material flow back to the bottom and complete the mixing function in short period of time.

特點 Features

- 螺旋循環攪拌使得原料混合更加均勻、快速
- 適用於各種塑料原料與色母的混合攪拌，新、舊料及色母混合則效果更佳
- 設備與原料所接觸部分的材料皆為不銹鋼制作，清洗容易，避免銹蝕
- 設有電控安全保護裝置，確保操作安全
- 可定制烘幹型
- Spiral circle mixing, makes raw materials mixture more even and fast
- Suitable for all kind of plastic raw material & color mixing , virgin, regrind & master batch mixtures will have effective result
- Fully stainless steel contacting parts,rust free and easy to clean
- Installed with power control device to ensure safety
- Customizable for drying type model

規格參數表 Specifications Parameters of All Models

型號 Model	功率/Power		容量KG capacity	電壓V Voltage	外形尺寸(cm) Dimension	轉速(R/min) Rotating Speed	淨重量(KG) Approx.Net Weight
	電機 Motor(kw)	加熱 Heat (HP)					
HVM-500	3		500	3803Φ	120x250	350	450
HVM-1000	4		1000	3803Φ	150x275	350	630
HVM-2000	5.5		2000	3803Φ	185x330	350	1050
HVM-3000	7.5		3000	3803Φ	200x375	350	1250
HVM-5000	7.5		5000	3803Φ	240x435	350	2100
HVM-10000	11		10000	3803Φ	300x530	350	4200
HVM-15000	15		15000	3803Φ	310x650	350	6300
HVMJ-500	3	9	500	3803Φ	120x250	350	480
HVMJ-1000	4	11	1000	3803Φ	150x275	350	670
HVMJ-2000	5.5	15	2000	3803Φ	185x330	350	1130
HVMJ-3000	7.5	15	3000	3803Φ	200x375	350	1350
HVMJ-5000	7.5	18	5000	3803Φ	240x435	350	2200
HVMJ-10000	11	18	10000	3803Φ	300x530	350	4500
HVMJ-15000	15	18	15000	3803Φ	310x650	350	6600

linear vibrating screen

直綫振動篩



本機適用於塑料、金屬、飼料、化工等粗細的篩分，利用網孔大小不同，經過振動馬達強勁而又均勻地將物料自動流過，從而篩分大小和除粉，省時省力。

The machine is applicable to the sieving of plastics, materials, feeds, chemicals, etc. With different mesh sizes, the motor provides strong vibration that the material could flow automatically and evenly; hence divides granules with different sizes and rids off dust, saving time and energy.

特點 Features

- 設計精巧耐用，操作簡便
- 換網、清洗方便、快捷
- 物料自動排出，可以自動化作業
- 與原料接觸部分均由不銹鋼材料制作，確保原料的精純度
- 故障少，保養簡易、維修方便
- 機械重量輕，底部配有剎車腳輪，移動、擺放輕

- With exquisite and durable design, simple operation.
- Easy and convenient to clean up and change the meshes.
- Impurities and coarse materials are able to be expelled automatically, realizing automated operation
- Fully stainless steel construction, ensuring material purity.
- Less malfunctions, easy maintenance and convenient to repair.
- Light weight and base equipped with castor wheels, easy to move and store.
- The mesh size can be customized.

規格參數表 Specifications Parameters of All Models

型號 Model	功率 Power	篩網孔徑 Net diameter	篩網孔徑 Net diameter	篩選能力 Capacity	機械尺寸(mm) Machine dimension	重量 Weight
HVM1101單層	550W2種	3mm	6~10mm	350-600KG	L1350 × B700 × H1200	80KG
HVM1102雙層	550W2種	3mm	6~10mm	350-600KG	L1350 × B700 × H1250	90KG

Metal separator

金屬分離器

- | | |
|---------|--------------------------------------|
| ①下料管 | ① Discharge tube |
| ②檢測線圈 | ② Detecting coil |
| ③控制器 | ③ Controller |
| ④金屬雜質 | ④ Metal impurities |
| ⑤剔除板 | ⑤ Removed plated |
| ⑥廢料口 | ⑥ waste mouth |
| ⑦合格料下料管 | ⑦ Qualified materials discharge tube |

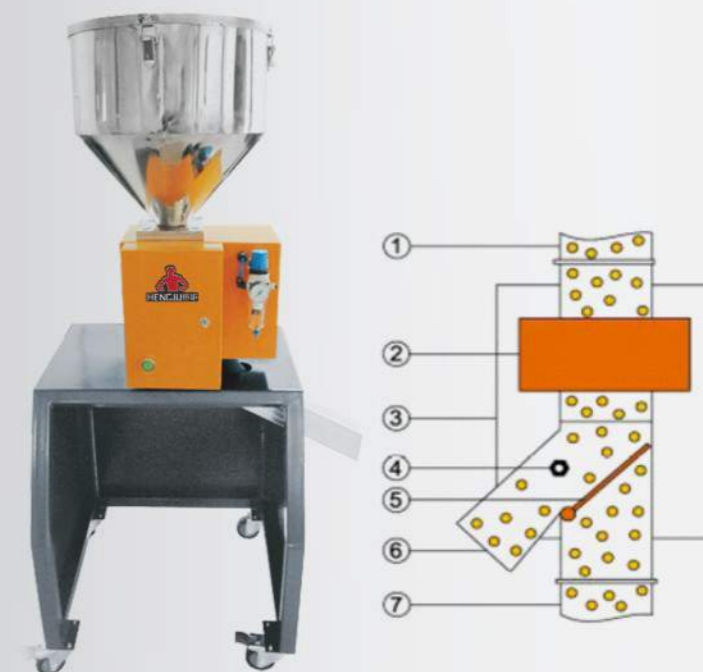
工作原理 Working principle

原料以落體方式經過檢測器②，檢測到金屬則立刻啟動分離擋板⑤，將含有金屬顆粒④的原料從分離口⑥排除，合格品從⑦合格料下料管直落入合格料中。

The raw materials going through the detector as falling method ②, start up the separator once has detecting the metal ⑤, then split the metal particles ④ from raw materials out to the separation mouth, while qualified products would falling to the discharge tube.

特點 Features

- 集合檢測線圈，控制器，分離裝置于一體，安裝使用簡單；
- 通過剔除裝置進行快速剔除，能最大程度減少物料損失；
- 安裝高度小，便于集成
- 檢測材料特性：乾燥，流動性好，無長纖維，無電導性；
- 檢測物料溫度：小於80℃，溫度超過此範圍，可選特殊高溫選件；
- 控制器可選擇安裝於檢測位置10m處
- 防護等級：IP65
- 主要用于檢測鬆散的顆粒狀物料（顆粒 < 8mm）以重力自流方式進料的場合，可用于塑料行業，食品行業，化工行業。



- Collection of detecting coil, controller, separating unit as an unit, installation is simple to use
- To quickly remove through eliminating device, to reduce the material loss to the greatest extent
- The installation height of small, easy integration
- Test material properties: dry, good liquidity, no long fiber, no conductivity.
- Test material temperature: Less than 80 °C. the temperature is more than this range, the optional special high temperature option
- Controller can choose to install in detecting position 10 m.
- Level of protection: Ip65
- Mainly used for detection of loose granular materials (particle < 8 mm) in gravity feed, can be used in the plastics industry, food industry, chemical industry

應用行業 Application

塑膠行業，化工行業，食品行業。
Plastic industry, chemical industry, food industry

使用金屬分離器的好處 The benefits of using metal separator

- | | |
|----------------------|---------------------------------------------------------------|
| • 保護生產設備 | • To protect the production equipment |
| • 提高生產效率 | • Enhance productivity |
| • 提高原料利用率 | • Raising utilization ratio of raw material |
| • 提升產品質量 | • Upgrading quality of products |
| • 減少設備維修費用及停工維修帶來的損失 | • Reduce equipment maintenance costs and shutdown maintenance |

產品優勢 Advantage

- 智能檢測，免維護
- 外殼和直接接觸產品部分的金屬材質都採用不銹鋼304制造
- 特殊的結構設計可以有效避免震動，噪聲和產品效應等外部因素的干擾；
- 多種口徑可選，型號滿足所有實際應用；
- 可避免產品堆積，阻塞而造成發霉；
- Intelligent detection, maintenance-free
- The contacting parts is made of 304 stainless steel.
- Special structure design can effectively avoid vibration, effect of external factors such as interference noise and products.
- A variety of caliber optional, Model meets all of the actual application
- Can avoid product accumulation, Obstruction caused by the mould

規格參數表 Specifications Parameters of All Models

型號 Model	進料管徑 Feed pipe diameter (mm)	探測靈敏度 Detection Sensitivity		最大通過量 Maximum Throughput/L/h	安裝高度 Mounting Height (mm)
		FeΦ	SUSΦ		
HJF-30	30	0.4mm	0.8mm	400	370
HJF-50	50	0.6mm	1.0mm	2000	
HJF-70	70	0.8mm	1.2mm	5000	
HJF-100	88	1.0mm	1.5mm	12000	473
HJF-120	108	1.2mm	2.0mm	16000	
HJF-150	138	2.0mm	2.5mm	25000	600
HJF-200	188	2.5mm	3.0mm	44000	922
HJF-250	238	3.0mm	3.5mm	69000	948

Mold rack

抽屜式模具架

特點 Features

- 節省空間、方便模具管理
 - 模具架抽板承載後抽送自如，協同備有的滑車和手動葫蘆可輕鬆、快捷的完成存取工作。
 - 模具架採取可拆移式結構，全部配件可任意組合。
 - 總體結構科學、合理，按要求組裝成型後牢固可靠，安全性高。
 - 每格最高承受重量達1000kg/1500kg/2000kg。
- Saves space and easy to manage molds.
 - Drawer with sliding rail is easy to access and hoist is moveable.
 - Mold rack can be disassembled for delivery and can work with accessories.
 - Maximum loading capacity of each drawer is up to 1000/1500/2000kg.



Screw type charging machine

螺桿式上料機



Hanging rack

吊包架



Low speed crusher

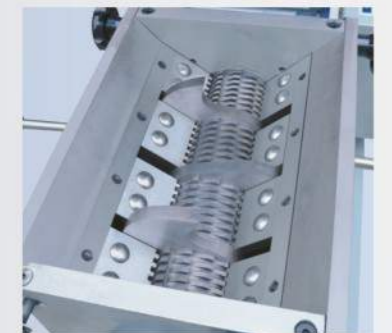
慢速破碎機



三叉底座
Trigenal Chassis



比例閥
Proportional valve



特點 Features

- 慢速塑料破碎機屬於無篩網型塑料回收破碎機。低速運轉，專門設計用於破碎注塑機產生的各種類型料頭、次品的破碎回收利用
- 該機具有工作時運轉穩定、無噪音、無粉塵污染，而且產品造粒均勻、粉碎效果好，設備運轉中無過熱現象，食用壽命長等特點
- The low speed crusher are designed without screen netting. And the machine is to be installed beside the machines ,with low speed rotation, especially recycling for all kinds of blow molded products and scrape materials;
- Stable functions, low noise, and low dust contamination, high crushing power with good out-coming. Without any overheating problem during the operating and it is a very durable machine.

規格參數表 Specifications Parameters of All Models

型號 Model	粉碎口徑(mm) Crusher Chamber	粉碎能力(KG/H) Crusher Capacity	轉速(R/min) Rotating Speed	功率/Power		外形尺寸(mm) Machine dimension LxWxH	淨重約 (KG) Approx .Net Weight
				電機Motor(kw)	加熱 Heat(HP)		
HGL-2316	230x160	50-80	25	0.75	1	76x52x123	260
HGL-2325	230x250	80-100	25	1.5	2	94x54x137	380
HGL-2626	260x260	100-150	25	2.2	3	76x52x123	260
HGL-2636	260x360	150-200	25	3	4	94x54x137	380

產品規格如有改變，恕不另行通知。We reserve the right to change specifications without prior notice.

Intermediate speed granulator

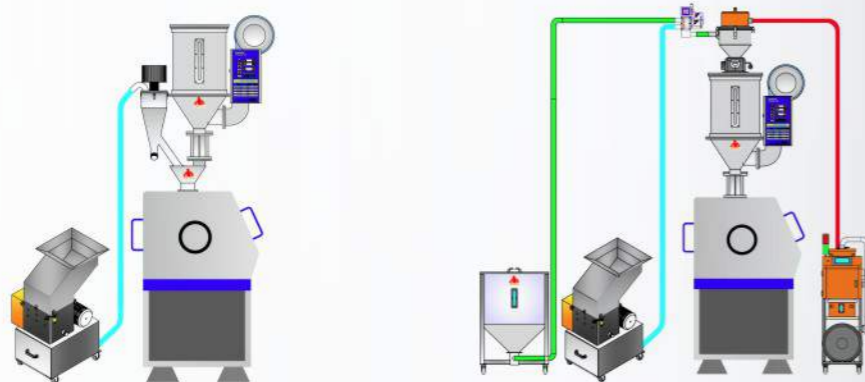
中速粉碎機



特點 Features

- 快速破碎機適用於水口料之粉碎再利用，操作簡單，性能優異；採用適中的轉速運轉將粉屑、噪音的產生及刀具磨損降到最低點，並且設置多種安全保護裝置符合歐洲安全標準。
- 體積小，占地面積少。
- 刀架優化設計。
- 不需要任何工具來完成維護，清理。
- 低粉塵、低噪音、低能耗。
- 高安全操作設計
- The HGM series granulators and with excellent quality and simple operation. The general speed of 250rpm is designed to granulate of sprue(Runners)and minimize the operating noise and wear & tear of the cutter blades. Electrical & mechanical safety devices meet to European safety regulations.
- Small footprint
- Optimized cutter saddle.
- No tools required for maintenance & cleaning up.
- Low power, noise and energy saving.
- High-grade safety.

結構原理圖 Structure Principle Diagram



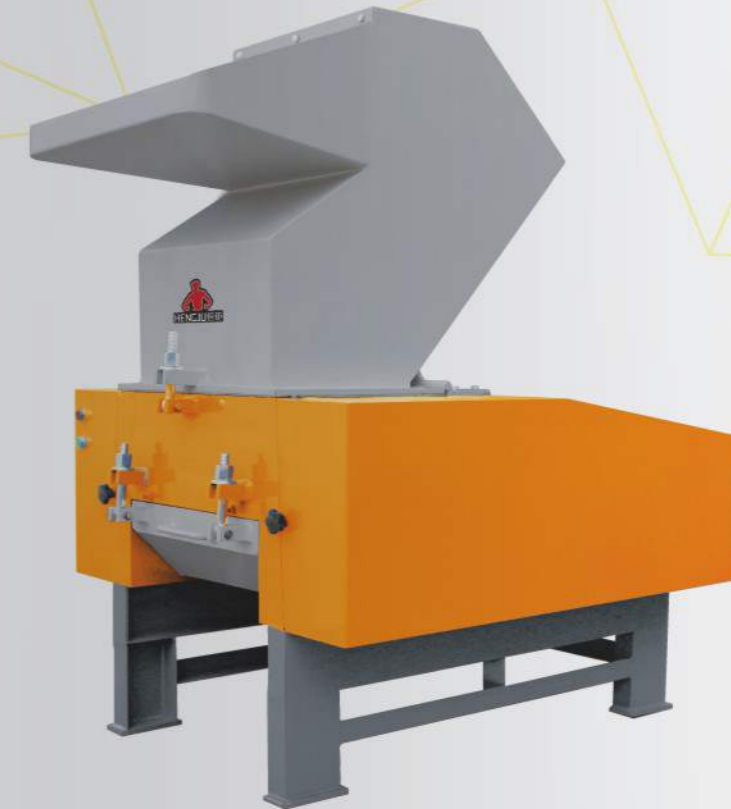
規格參數表 Specifications Parameters of All Models

型號 Model	粉碎口徑(mm) Crusher Chamber	粉碎能力(KG/H) Crusher Capacity	轉速(R/min) Rotating Speed	固定刀 Stationary Cutter	旋轉刀R Rotary Cutter	功率Power (KW)	外形尺寸(mm) LxWxH	淨重約 (KG) Approx .Net Weight
HGM-1817	180x170	40-70	320	2	9	1.5	69x42x113	135
HGM-1824	180x240	50-90	320	2	21	2.2	93x49x1140	220
HGM-2231	220x310	90-150	320	2	27	4	69x42x113	135

產品規格如有改變,恕不另行通知。We reserve the right to change specifications without prior notice.

Claw type crusher (high speed)

快速破碎機



特點 Features

- 前置刀片加大切削角度，效率高
- 投料門四面雙層隔音，靜音更佳
- 刀片採用Cr12MoV高強度合金工具鋼
- 採用知名牌電器、電機
- 針對大塊膠頭料或硬度較高的材料
- To increase the efficiency added the cutting angle for front blade
- It makes the better soundproof effects having two layers sound insulation inside the cast hopper.
- use Cr12MoV high strength alloy tool steel blade
- adopt famous brand electrical appliances, motor
- in view of the large pieces of rubber head material or high hardness materials

規格參數表 Specifications Parameters of All Models

型號 Model	粉碎口徑(mm) Crusher Chamber	粉碎能力(KG/H) Crusher Capacity	轉速(R/min) Rotating Speed	固定刀 Stationary Cutter	旋轉刀 Rotary Cutter	功率Power (kw)
HGPJ-1816	180x160	90-120	320	2	3	2.2
HGPJ-2922	290x220	100-160	320	2	6	4
HGPJ-4025	400x250	150-400	320	2	6	5.5
HGPJ-4025	400x250	150-400	320	2	6	7.5
HGPJ-4630	460x300	300-600	320	2	6	11
HGPJ-5133	510x330	500-800	320	2	6	15
HGPJ-5540	550x400	700-1000	320	2	6	22
HGPJ-5072	500x720	1500-1800	320	2	9	37
HGPJ-6394	620x940	1500-2400	320	4	9	55
HGPJ-63110	630x1100	2600-3600	320	4	9	75

產品規格如有改變,恕不另行通知。We reserve the right to change specifications without prior notice.

Swing-arm robot

斜臂式-單臂機械手

卧式機



立式機



特點 Features

- 手臂採用高強度鋁合金結構梁配合精密綫性滑軌，低噪音、壽命長。
- 雙截式手臂為特殊設計之皮帶倍速機構，縮短手臂上下行時間并可減少整機高度。
- 雙臂式手臂適合三片模產品和澆口取出。
- 引拔部分採用可調手柄，無需工具即可輕鬆調整。
- Liner slider rail and alloy aluminum extrusion applied for arm, low noise, long use life.
- The telescopic version uses a unique. Nylon belt transmission mechanism inside the vertical arm assembly Shorten the time and reducing the height of the whole machine.
- Double arm robots for three-plate molds.
- Use adjustable crosswise part of the handle, don't need tools can be easily adjusted.

特點 Features

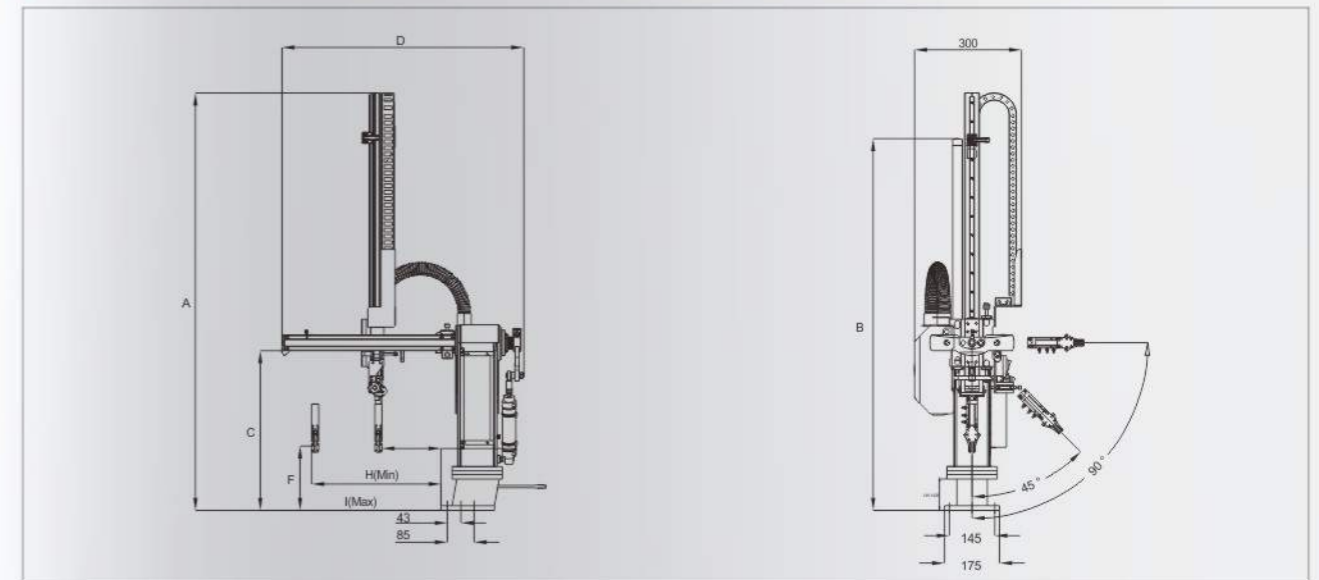


- 掌上型對話式操作簡單易學，可自由切換中文/英文界面；
- 內置八組標準程序，50組模具記憶，可存儲12組教導程序，能完全滿足生產使用需求；
- 自動運作情況下可以方便修改各項延時時間與計數等參數；
- LED顯示重要信號，比如安全門、開模完、允許開模、頂針、成品測試等；
- 借用輸出點可連接其他自動化設備，如輸送帶、剪切水口、噴脫模劑等。
- Palm dialogue operation device type, can freely switch Chinese/English interface, easy operation Built in groups of standard program, 50 groups of molding memorizing, Function can store 12 groups where compliance program, can completely meet all the demand for production use;
- Automatic operation can easily modify the delay time and count parameters ;
- LED display important signal,such as security doors,molding finished,allow off mode,a thimble,a Product test
- Output point can be connected to other automation equipment,such as conveyor,shear,spray nozzle release agent.

規格參數表 Specifications Parameters of All Models

機型 Model	HL-550	HL-550	HX-550	HX-650	HL-750	HL-850	HL-950
適用成型機 (Ton) Recommended (MM/Ton)	150T以下	50-180	100T以下	50-180	150-200	200-280	280-400
上下行程 (mm) Vertical Stroke(mm)	550	650	550	650	750	850	950
引拔行程 (mm) Crosswise Stroke(mm)	125		125		200		
旋出角度(度) Swing angle(degree)	60-90		60-90		60-90		
最大荷重 (kg) Max loading(kg)	2		2		2		
取出時間(sec) Dry take out Time(sec)	0.7	0.8	0.7	0.8	1	1.2	1.4
全循環時間(sec) Dry cycle Time(sec)	4/4.2	4.2/4.4	4.8/5	5/5.2	4.8	5.2	6
空氣消耗量(Nl/cycle) Air consumption(Nl/cycle)	10.5/11.5	12-13	14	15	13	14.5	15.5
電源 Power	AC220V±10V 50/60HZ						
電源容量 Power capacity	0.2						
工作氣壓 Air pressure	5kgf/cm ² 0.49Mpa						
最大容許氣壓 Max air pressure	8kgf/cm ² 0.8Mpa						
驅動方式 Drive mode	氣動 Pneumatic cylinder						
控制系統 Control system	SXCC-X1						
淨重 (kg)	35/47	36/48	35/47	36/48	49	52	53

尺寸圖表 Outer dimensions



Model	A	B	C	D	E	F	G	H	I	J	K
HJP650V	1330	1220	540	770	/	210	/	50	440	/	/
HJP850W V	1250	1000				180		130	435		

One/Two axes servo driven robot

AC伺服橫走式機械手



單截雙臂



雙截雙臂



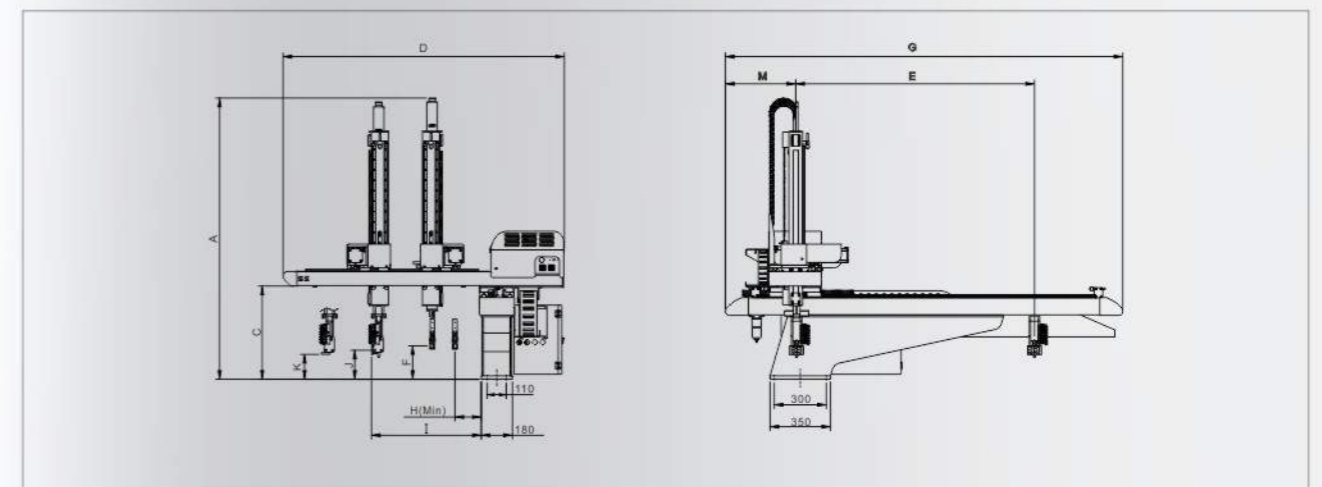
特點 Features

- 8寸彩屏顯示
- NC簡易程序
- 各軸加減方便
- 模塊化PC設計
- 8 inch color touch screen.
- Micro-computer control system, strong ability of anti-interference, stable production and fast counting.
- Each axis with the function of acceleration and deceleration.
- Molding memorizing function, it can be set fast while exchanging the mold, convenient for production and increase efficiency.

規格參數表 Specifications Parameters of All Models

機型 Model	HS-600	HS-700	HS-800	HS-900	HS-1000	HS-1100	HS-1300	HS-1500	HS-1700	HS-1900	HS-2200
電源容量 (kva) Power capacity (kva)	1.5/2	1.5/2	2.5/3.8	2.5/3.8	3~5	3~5	3~5	3~5	5~8	6~10	10.5
適用成型機 (Ton) Recommended IMM (Ton)	50-150	80-200	120-250	200-350	350-450	350-550	400-600	650-1000	850-1300	1000-1600	1600-2500
橫行程 (mm) Recommended IMM (mm)	1100(1300)		1300(1540)	1300(1540)	1540(1800)	1540(1800)	2000(2200)	2400(2700)	2700(3000)	2700(3000)	3000(3500)
引拔行程 (mm) Crosswise Stroke (mm)	P: 500	P: 500	P: 700	P: 700	P: 900	P: 900	P: 950	P: 1150	P: 1300	P: 1500	P: 1700
上下行程 (mm) Vertical Stroke (mm)	R: 300	R: 300	R: 400	R: 400	R: 500	R: 500	R: 800	R: 900	R: 900	R: 1100	R: 1100
上下行程 (mm) Vertical Stroke (mm)	600	700	800	900	1000	1100	1300	1500	1700	1900	2200
最大荷重 (kg) Max loading (kg)	5			10			12	15	20	25(50)	35(80)
取出時間 (sec) Dry take out Time (sec)	1	1	1	1.5	1.5	1.5	2	2	3	3	3
全循環時間 (sec) Dry cycle Time (sec)	4.8	4.8	5.5	6	7.3	7.5	12	14	17	18	21
空氣消耗量 (N/cycle) Air consumption (N/cycle)	3			5			80	85	90	95	110
電源 Power	Ac220v±10v 50/60HZ										
電源容量 Power capacity	0.2										
工作氣壓 Working pressure	5kgf/cm ² 0.49Mpa										
最大容許氣壓 Max. allowed pressure	8kgf/cm ² 0.8Mpa										
驅動方式 Drive mode	AC servo motor on 5axis										
側姿 Swivel	90° Fixed Pneumatic										
控制系統 Control system	SGCX-AM3/SGCX-AY3										
淨重 (kg)	180-230	185-235	210-250	220-260	335-370	355-380	480-550	520-585	1350-1600	1500-1850	2850

尺寸圖表 Outer dimensions



Model	A	B	C	D	E	F	G	H	I	J	K	M
HJR800WD-S5/S3	1500		545	1540	1400		2180		820	210	190	
HJR1000WD-S5/S3	1620	/	545	1700	1580	230	2350	150	1000			420
HJR1200WD-S5/S3	1800		590	2020	1800		2500		1250	250	170	

Three/Five axes servo driven robot

全AC伺服高速機械手

單截單臂



單截雙臂



雙截雙臂



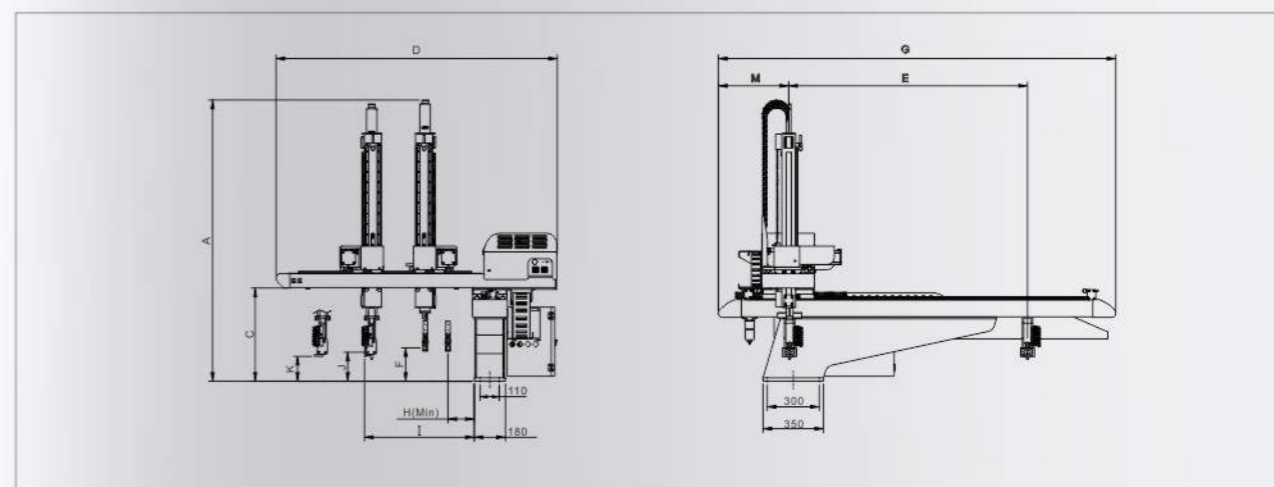
特點 Features

- 8寸彩屏顯示
- NC簡易程序
- 各軸加減方便
- 模塊化PC設計
- 8 inch color touch screen.
- Micro-computer control system, strong ability of anti-interference, stable production and fast counting.
- Each axis with the function of acceleration and deceleration.
- Molding memorizing function, it can be set fast while exchanging the mold, convenient for production and increase efficiency.

規格參數表 Specifications Parameters of All Models

機型 Model	HY-600	HY-700	HY-800	HY-900	HY-1000	HY-1100	HY-1300	HY-1500	HY-1700	HY-1900	HY-2200
電源容量 (kva) Power capacity (kva)	1.5/2	1.5/2	2.5/3.8	2.5/3.8	3~5	3~5	3~5	3~5	5~8	6~10	10.5
適用成型機 (Ton) Recommended IMM (Ton)	50-150	80-200	120-250	200-350	350-450	350-550	400-600	650-1000	850-1300	1000-1600	1600-2500
橫行程 (mm) Recommended IMM (mm)	1100(1300)		1300(1540)	1300(1540)	1540(1800)	1540(1800)	2000(2200)	2400(2700)	2700(3000)	2700(3000)	3000(3500)
引拔行程 (mm) Crosswise Stroke (mm)	P: 500	P: 500	P: 700	P: 700	P: 900	P: 900	P: 950	P: 1150	P: 1300	P: 1500	P: 1700
上下行程 (mm) Vertical Stroke (mm)	R: 300	R: 300	R: 400	R: 400	R: 500	R: 500	R: 800	R: 900	R: 900	R: 1100	R: 1100
上下行程 (mm) Vertical Stroke (mm)	600	700	800	900	1000	1100	1300	1500	1700	1900	2200
最大荷重 (kg) Max loading (kg)	5			10			12	15	20	25(50)	35(80)
取出時間 (sec) Dry take out Time (sec)	0.5	0.6	0.65	0.7	0.7	0.8	1.5	1.8	2.2	2.6	3
全循環時間 (sec) Dry cycle Time (sec)	4.8	4.8	5.5	6	7.3	7.5	12	14	17	18	21
空氣消耗量 (N/cycle) Air consumption (N/cycle)	3			5			80	85	90	95	110
電源 Power	Ac220v±10v 50/60HZ										
電源容量 Power capacity	0.2										
工作氣壓 Working pressure	5kgf/cm ² 0.49Mpa										
最大容許氣壓 Max. allowed pressure	8kgf/cm ² 0.8Mpa										
驅動方式 Drive mode	AC servo motor on 5axis										
倒姿 Swivel	90° Fixed Pneumatic										
控制系統 Control system	SGKB-Y300										
淨重 (kg)	180-230	185-235	210-250	220-260	335-370	355-380	480-550	520-585	1350-1600	1500-1850	2850

尺寸圖表 Outer dimensions



Model	A	B	C	D	E	F	G	H	I	J	K	M
HJR800WD-S5/S3	1500		545	1540	1400		2180		820	210	190	
HJR1000WD-S5/S3	1620	/	545	1700	1580	230	2350	150	1000			420
HJR1200WD-S5/S3	1800		590	2020	1800		2500		1250	250	170	

Vertical transporter

承接臺

特點 Features

- 與機械手臂訊號相連接，準確的接住成品，保護成品；
- 下降後自動傾斜角度，將成品滑向工作臺；
- 不銹鋼臺面，不刮傷成品，外觀美觀耐磨；
- 具備雙點組合與快速接頭；
- 上行行程可以調整，可依據射出機與機械手高度調整。
- Connected with robot signal, so it can receive the products precise and protect the products from damage.
- After descending, automatically slope to slide the products to worktable;
- FRP plastic surface protect products from scratched, beautiful appearance and wear-proof;
- With filter and instant fitting, easy and fast;
- Vertical stroke can be adjusted according to the height of IMM and Robot.



規格參數表 Specifications Parameters of All Models

電源 Power Source	工作氣壓 Working Pressure	適用成型機 I.M.M. Range	最大荷重 Max.loading	空氣消耗量 Air consumption	淨重 Net Weight
DC24V	5Kgf/cm ² 0.49Mpa	50~1000ton	2~10 kg	0.5 NI/cycle	20 kg

Belt conveyor

輸送帶

特點 Features

- 採用鋁合金機構梁組成，重量輕且結構緊湊。
- 通過與機械手等外部信號聯動，實現間歇運轉。
- 皮帶表面平坦，使作業空間能得到充分利用。
- 兩端高度可調整，調整方便，手輪調整輕鬆容易。
- 附四個腳輪，移動方便；四支固定腳可以折迭，不用時不占空間。
- Aluminum alloy body beam of light weight and compact structure.
- With the external signals, such as manipulator linkage, the realization of intermittent operation
- Flat belt surface, make work space can be fully used
- Height adjustable on both ends, convenient adjustment, the handwheel adjustment easily
- Attached four castor, mobile convenience; Four hits the fixed foot can be folded, does not occupy a space when not in use

規格參數表 Specifications Parameters of All Models

機型Model	200W-1000L	300W-1500L	400W-2000L	500W-2000L	600W-2000L
皮帶寬度W(mm) Width of belt	200	300	400	500	600
輸送帶長度L(mm) Length of Conveyor	1500/2000/2500/3000/3500/4000/4500/5000/5500/6000				
低端高度H1(mm) Height of lower end	700-1000				
高端高度H2(mm) Height of higher end	1000-1600				
平面長度L2(mm) Plane	300(only for BNB-)		500(only for BNB-)		700(only for BNB-)
最大荷重(kg) Max.Loading	20				
最快速度m/min Max.Speed	12				
皮帶 Belt Description	材質: PVC/厚: 2mm/顏色: 綠色/耐溫: -10℃~+80℃/防靜電、耐磨、耐油				
電源 Power Source	Single Phase AC 220V ± 10V 50/60HZ				
電源容量(KVA) Power Capacity	0.2KVA				



注：可依據客戶特殊規格接受特殊規格訂制

Customers application cases

客戶現場應用案例

引領塑膠行業自動化系統發展方向,企業從塑膠生產自動化到PET除濕乾燥系統、自動控制原料輸送系統、節能系統。

我們恒鉅人將以豐富的經驗與技術能力為貴公司提供高性能的產品和優質的服務。

Guide plastic industry automation system development direction, the enterprise from plastic production automation to PET dehumidifying drying system, automatic control raw material conveying system, energy saving system.

Our people will be constant Heng Ju wealth of experience and technical ability to provide high-performance products and quality service for your company.



Automation system, leading value

自動化系統，引領價值

機械自動化技術的應用，不僅僅是生產節奏的加快和生產利潤的提高，更為主要的是可以大大促進整個應用行業的生產效率，同時也能大大縮短行業的生產周期，進而降低生產成本。

Mechanical automation technology application, not just the production rhythm speeding up and profit increase, more major is can greatly promote the application of industry production efficiency, but also can shorten the production cycle of the industry, thus reduce the production cost.





HAITIAN
PLASTICS MACHINERY



High-end quality, the best shape

高端品質，極致塑造

專業成就卓越，從細節出發，體貼不同的需求；站在專業的角度，完成自我的優化，對品質的堅持，這是恒鉅機械矢志不渝對顧客的承諾。

Professional achievement is outstanding, starting from the details, and considerate different requirements; Standing in the professional point of view, complete optimization of the self, to adhere to the quality. This is a Heng Ju machine to remain constant commitment to customers.

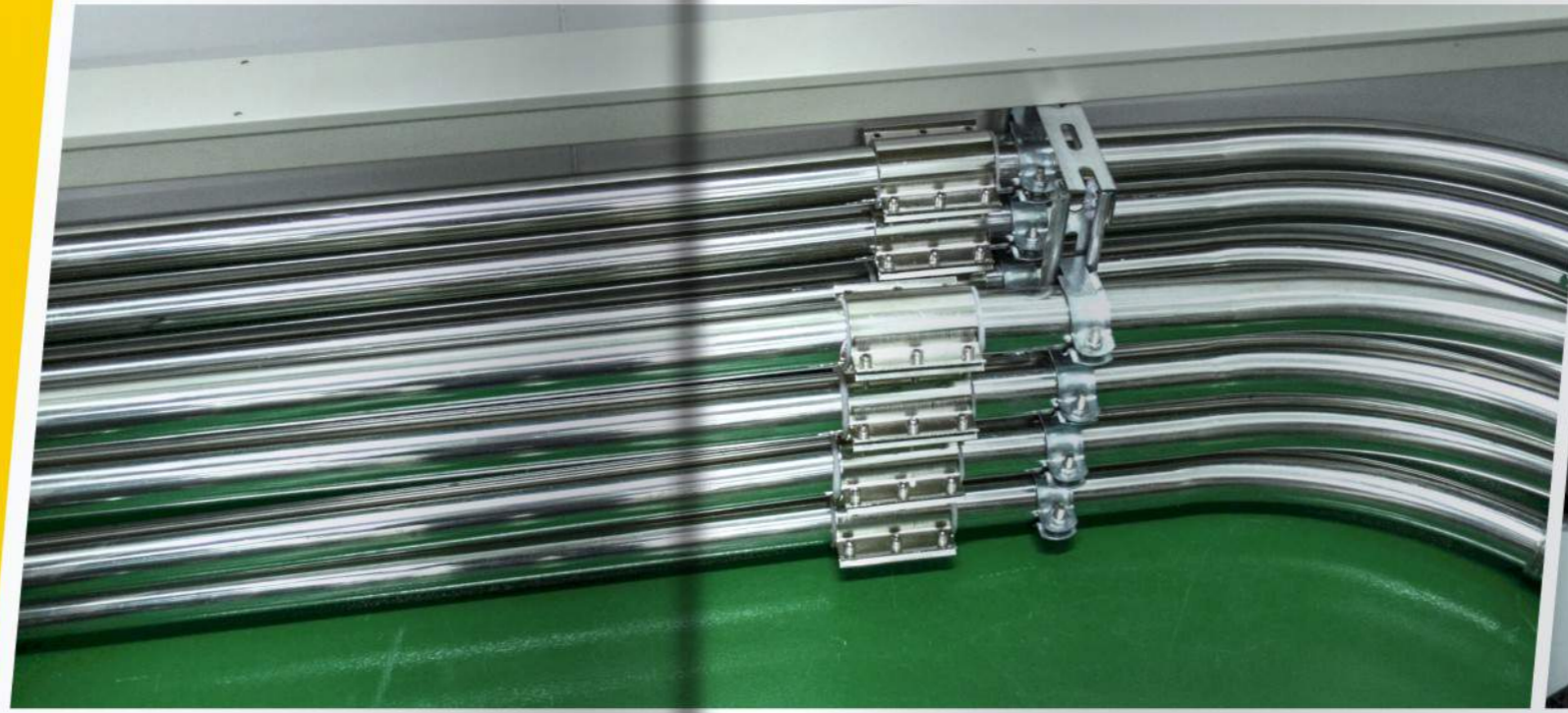


In one hundred, the quality for this

百年大計，質量為本

質量是企業賴以生存和發展的保證，是開拓市場的生命線；用戶對產品質量的要求越來越高，提高質量能加強企業在市場中的競爭力；產品質量是形成顧客滿意的必要因素，因此較好的質量會給企業帶來較高的利潤回報。

Quality is the assurance of enterprise survival and development, is the lifeline of market development; The user requirements for product quality is higher and higher, improve quality to enhance enterprise competitiveness in the market; Product quality is the necessary factor in formation of customer satisfaction, so better quality will bring higher returns.





Heng Ju quality, perfected

恒鉅品質，臻于完善

經過多年的發展，恒鉅人一直秉着“憑質量生存，靠信譽發展”這一宗旨，讓恒鉅在激烈的市場競爭中立于不敗之地！

After years of development, Heng Ju man has been holding "With the quality of survival, relying on the credibility of development" purposes, Let Heng Ju in the fierce competition in the market!



Create mechanical aesthetics of practical value

創造機械美學實用價值

機械美學新興的工業時代的美學訴求，機械本身蘊涵着美感，不僅是帶來實利的功能之美，更主要的是一種前所未有的形式之美。機械本身的合乎功能、技術邏輯的構造和外表具有一種樸素的不加雕飾的美。

Mechanical aesthetics of emerging industry the aesthetic appeal of The Times, the machinery itself contains beauty, beauty is not only to bring the function of the utilitarian, more major is a form of unprecedented beauty. Mechanical itself to function, structure and appearance of technological logic is a kind of simple beauty without carve.

